

# PARK NEWSLETTER



Monday 5<sup>th</sup> December 2016

*Ensuring every individual achieves their best through high expectations for all; with a focus on confidence, creativity and care.*

## ★★★Stars of the Week★★★

### Explorers (Reception & Year 1)

**Faatimah** in Columbus Class

**Zainab** in Cook Class

**Leila** in Da Gama Class

**Ameelah** in Aldrin Class

**Ali** in Attenborough Class

**Arham** in Marco Polo Class

### Scientists and Inventors (Years 2, 3 & 4)

**Annisha** in Einstein Class

**Sienna** in Marie Curie Class

**Yo-Rou** in Pasteur Class

**Eddy** in Da Vinci Class

**Ameera** in Edison Class

**Huzayfah** in Galileo Class

**Aleksa** in Berners-Lee Class

**Farhan** in Brunel Class

**Ozoda** in Hawking Class

### Leaders (Years 5 & 6)

**Ijaz** in Gandhi Class last week

**Ridisha** in Gandhi Class this week

**Isaac** in Helen Keller Class last week

**Harris** in Helen Keller Class this week

**Maariyah** in Rosa Parks Class last week

**Alioune** in Rosa Parks Class this week

**Riyad** in Malala Class

**Sonia** in Mandela Class

**Lisa** in Pankhurst Class

## Standards Leader Stars of the Week

**Miss Cook's Star of the Week in KS1**

**Hasan** in Aldrin Class

**Mr Smith's Star of the Week in Lower KS2**

**Muhammad** in Berners Lee Class

**Mr Davy's Star of the Week in Upper KS2**

**Kelsie** in Malala Class

## Mrs Ttofalli's Classes of the Week

**Cook Class** in Year R for their enthusiasm towards their learning.

**Da Vinci** in Year 3 for their superb behaviour around the school and love of learning.

## House Points Results



Birch	270
Maple	285
Sycamore	350
Oak	285



## Word of the Week

Key Stage 1: **Celebrate**

The children will be talking about the Nativity Story



Key Stage 2: **Celebration**

## Value of the Week

This week, we will be thinking about '**Tolerance**' in our phase assemblies.

## Optional Project Homework

Theme: **Express Yourself**

Deadline: 12.12.16

## Thought for the Week

Winning doesn't always mean being first; winning means doing better than you've done before.

## School Lunch Menu

This week is **Week 2** of the menu.

Our [School Menu](#) is available on our website.



### Winter Showcase

Our Winter Showcase will take place on **Friday 16<sup>th</sup> December**. St Matthews Church have kindly agreed to allow us to use the church as a space for us to perform whilst we are without our PE Hall.



There will be two performances, one at **9:30am** and one at **2:15pm**. Each year group will also perform once at the end of the school day over the last week so that you have the opportunity to watch their performance if you are unable to attend the Winter Showcase.

Letters will be sent home shortly with further details.

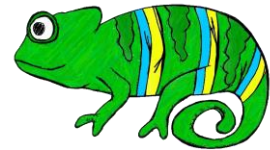
### Learning Power: Use your imagination!

This week we are focusing on **using our imagination**. Children in Reception, KS1 and Lower KS2 are talking about the **Creative Chameleon**. Upper Key Stage 2 are reading a story called Clive the Crow.



We show we are creative by:

- Thinking of new ideas and questions.
- Coming up with new strategies.
- Letting our imagination go!



### Congratulations!



Congratulations to Anastajia in Pasteur Class who has won the Tfl Christmas Card Competition! TFL contacted us to say, *Thank you so much for sending your children's entries for the "Design Tfl's Festive Card Competition". We were astounded by all of the brilliant concepts, wonderful designs and creative ways we saw of Father Christmas and Perry the Tfl Penguin travelling around London. Although this made judging incredibly difficult, we really enjoyed looking through every single one of the entries we received!*

Anastajia's entry

Anastajia will receive a printed copy of her card, a special Tfl tour and a tube ride in the driver's cab.

Congratulations also to Calla in Mandela Class who was chosen as one of twelve runners-up.



Calla's entry

### Diary Dates

December	
8 <sup>th</sup>	<ul style="list-style-type: none"> <li>• Year 3 Kidzania Visit</li> <li>• PTA Funded Reception Cinema Visit – The Gruffalo</li> <li>• PTA Funded Yr 1&amp;2 Cinema Visit – Finding Dory</li> </ul>
9 <sup>th</sup>	<ul style="list-style-type: none"> <li>• PTA Funded Yr 5&amp;6 Cinema Visit – The BFG</li> </ul>
9 <sup>th</sup>	<ul style="list-style-type: none"> <li>• Under 5 Stay &amp; Play Session</li> </ul>
14 <sup>th</sup>	<ul style="list-style-type: none"> <li>• PTA Funded Yr 3&amp;4 Cinema Visit – Finding Dory</li> <li>• John Lewis Performance after school</li> </ul>
16 <sup>th</sup>	<ul style="list-style-type: none"> <li>• Winter Showcase Performances 9:30am &amp; 2:15pm</li> </ul>
19 <sup>th</sup>	<ul style="list-style-type: none"> <li>• Class Christmas Parties</li> </ul>
20 <sup>th</sup>	<ul style="list-style-type: none"> <li>• Christmas Lunch</li> <li>• Last day of term</li> </ul>
January 2017	
4 <sup>th</sup>	<ul style="list-style-type: none"> <li>• <del>School closed for Training Day</del> <b>SCHOOL OPEN - Back to school</b></li> </ul>