

2018 KS2 School Dashboard for governors & school leaders

Produce custom dashboards at
www.fftaspire.org

Park Primary School

LA Newham DFE 3162051 Produced September 2018 Version 1

What it is

Seven easy-to-use reports which help governors and school leaders to evaluate school performance using the latest 2017 DfE school performance indicators.

What it tells you

- What are the strengths and areas for improvement in your school?
- How does attainment and pupil progress compare to the national average?
- How are you performing in different subjects?
- Do you have any under-performing groups of pupils?
- How might the context of your school affect performance?
- How does pupil attendance compare to the national average?

About the data shown

1 2 3

Actual results

Actual results for your school, using a range of measures such as averages and thresholds.



Gauges

These display headline indicators and whether actual results and pupils' progress are in line with, or significantly above or below, the national average.

ESTIMATED



1 2 3

Pupil progress

The value added progress that your pupils have made from one key stage to the next. FFT compares your actual results to the estimated results based on the progress of similar pupils nationally.



Statistical significance

Green plus signs and red minus signs highlight where either actual results or pupils' progress is significantly above or below the national average.



Trends

The dashboard analyses school performance over 3-5 years. Any significant year-on-year improvement is highlighted using an up arrow. Significant declines in performance are highlighted with a down arrow.



Strengths & weaknesses

These highlight key pupil groups and subjects where progress is above or below the national average.

Working in partnership with



Data sources

Generated from FFT Aspire which includes data sourced from the DfE (National Pupil Database) and data calculated by FFT. FFT is accredited as a DfE supplier to receive early access to ASP data. Headline performance indicators will be consistent with the DfE School Performance Tables and ASP.

Overview

KS2 Attainment 2018 · Actual results

75 pupils

KS2 Progress 2018 · Value Added

70 matched pupils

Average Scaled Score (Re, Ma)

% Expected standard+ (Re, Wr, Ma)

Average Scaled Score (Re, Ma)

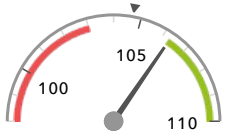
% Expected standard+ (Re, Wr, Ma)

106.3 + ↓

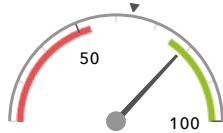
79% +

+4.0 + ↓

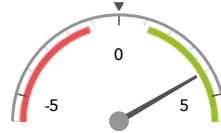
+25% +



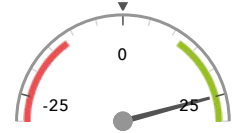
Significantly above the national average (104.7) ◀



Significantly above the national average (64%) ◀



Significantly above the national average (0) ◀



Significantly above the national average (0%) ◀

KS2 higher and lower performing pupil groups 2018

	Higher performing	Lower performing
Overall achievement <small>pupil progress</small>	Any Other (5) + Lower attainers (29) + Summer Term (28) +	
KS2 reading achievement <small>pupil progress</small>	Any Other (5) Lower attainers (29) + Summer Term (28) +	Autumn Term (22) ↓
KS2 writing achievement <small>pupil progress</small>	Lower attainers (29) + Any Other (5) Summer Term (28) +	Black African (6)
KS2 mathematics achievement <small>pupil progress</small>	Any Other (5) + Lower attainers (29) + SEN Support (9) +	
KS2 grammar, punctuation & spelling achievement <small>pupil progress</small>	Bangladeshi (23) + Lower attainers (29) + Summer Term (28) +	

Attainment & progress

KS2 Attainment 2018

75 pupils

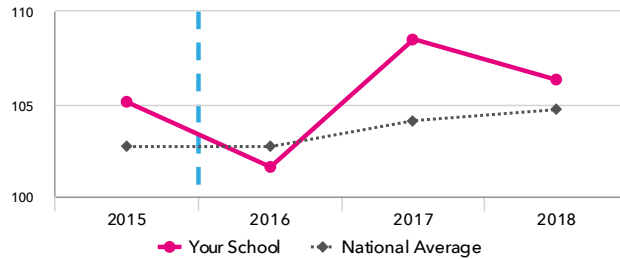
Average Scaled Score (Re, Ma)

106.3 + ↓

FFT Rank



Significantly above the national average (104.7)



KS2 Progress 2018

70 matched pupils

Average Scaled Score (Re, Ma)

+4.0 + ↓

FFT Rank



Significantly above the national average (0)

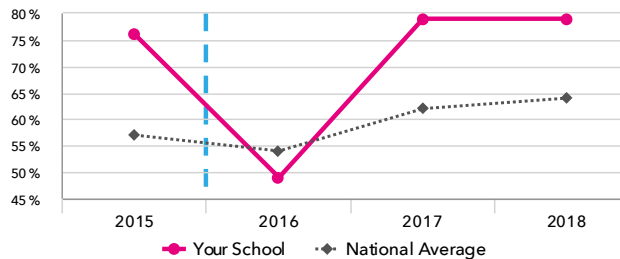
% Expected standard+ (Re, Wr, Ma)

79% +

FFT Rank



Significantly above the national average (64%)



% Expected standard+ (Re, Wr, Ma)

+25% +

FFT Rank



Significantly above the national average (0%)

KS2 performance summary

	Actual results			Pupil progress		
	2016	2017	2018	2016	2017	2018
Number of Pupils / % Matched	75	72	75	92%	88%	93%
% Expected standard+ (Re, Wr, Ma)	49% ↓	79% + ↑	79% +	+4% ↓	+31% + ↑	+25% +
% Higher standard (Re, Wr, Ma)	7%	18% + ↑	11%	+3%	+15% +	+5%
Average Scaled Score (Re, GPS, Ma)	102.8 ↓	109.4 + ↑	107.2 + ↓	+1.5 + ↓	+6.7 + ↑	+4.7 + ↓
Average Scaled Score (Re, Ma)	101.6 ↓	108.5 + ↑	106.3 + ↓	+0.8 ↓	+6.3 + ↑	+4.0 + ↓
% Expected standard+ Reading	60% ↓	89% + ↑	83%	+1% ↓	+25% + ↑	+16% +
% Higher standard Reading	19%	44% + ↑	21% ↓	+5%	+28% + ↑	+1% ↓
Scaled Score Reading	100.8 ↓	108.2 + ↑	105.5 ↓	+0.6 ↓	+6.4 + ↑	+2.9 + ↓
% Expected standard+ Writing	81%	86%	87%	+10%	+18% +	+16% +
% Higher standard Writing	23% ↓	25%	23%	+13% +	+15% +	+11% +
Scaled Score Writing	102.9 +	103.5 +	103.5	+3.3 +	+4.3 +	+3.5 +
% Expected standard+ Maths	60% ↓	89% + ↑	89% +	-5% ↓	+19% + ↑	+20% +
% Higher standard Maths	19%	47% + ↑	37% +	+5%	+33% + ↑	+22% +
Scaled Score Maths	102.5 ↓	108.9 + ↑	107.0 +	+0.7 ↓	+6.3 + ↑	+5.0 +
% Expected standard+ Grammar, Punctuation & Spelling	76% ↓	93% + ↑	92% +	+10%	+20% +	+21% +
% Higher standard Grammar, Punctuation & Spelling	37% +	63% + ↑	55% +	+21% +	+44% + ↑	+33% +
Scaled Score Grammar, Punctuation & Spelling	105.6	111.6 + ↑	109.1 + ↓	+3.7 + ↓	+7.8 + ↑	+5.8 + ↓
% Expected standard+ Science	84%	88%	77%	-	-	-
Average Point Score (Re, Wr, Ma)	-	-	-	-	-	-
% Level 4+ (Re, Wr, Ma)	-	-	-	-	-	-
% Level 4B+ (Re, Wr, Ma)	-	-	-	-	-	-
% Level 5+ (Re, Wr, Ma)	-	-	-	-	-	-

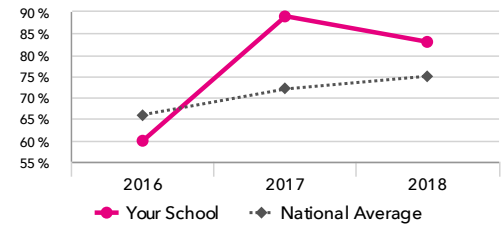
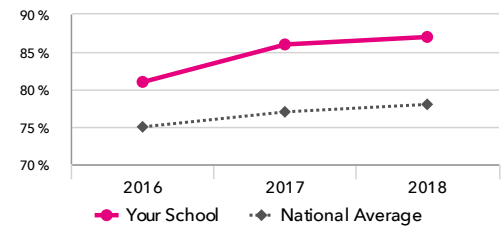
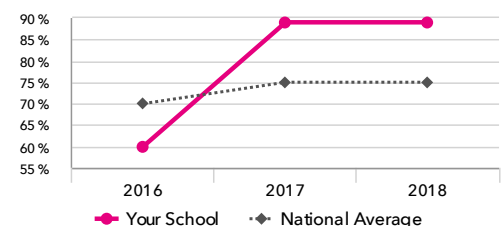
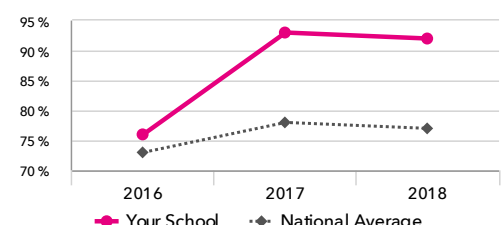
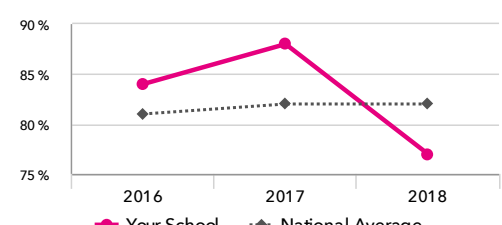
Pupil groups

KS2 Pupil groups performance 2018

		Pupils	Actual results			Pupil progress			High-to-low chart
			Average Scaled Score (Re, Ma)	% Expected standard + (Re, Wr, Ma)	% Higher standard (Re, Wr, Ma)	Average Scaled Score (Re, Ma)	% Expected standard + (Re, Wr, Ma)	% Higher standard (Re, Wr, Ma)	
Summary	All Pupils >	75	106.3 $\uparrow\downarrow$	79% \uparrow	11%	+4.0 $\uparrow\downarrow$	+25% \uparrow	+5%	<p>Pupil progress in Average Scaled Score (Re, Ma) visually from high to low</p>
Gender	Male > Female >	38 37	106.5 106.1 \downarrow	76% \uparrow 81%	11% 11%	+3.8 \uparrow +4.1 $\uparrow\downarrow$	+20% \uparrow +31% \uparrow	+6% +4%	
Prior Attainment	Higher attainers > Middle attainers > Lower attainers >	12 29 29	111.8 \downarrow 107.0 $\uparrow\downarrow$ 104.0 \uparrow	100% 90% \uparrow 66% \uparrow	42% 7% 0%	+1.5 \downarrow +2.8 $\uparrow\downarrow$ +6.1 \uparrow	+4% +22% \uparrow +38% \uparrow	+15% +5% -0%	
Pupil Premium	FSM (in last 6 years) > Not FSM (in last 6 years) >	24 51	105.4 \uparrow 106.7	75% \uparrow 80%	8% 12%	+3.7 \uparrow +4.1 $\uparrow\downarrow$	+22% \uparrow +27% \uparrow	+6% +4%	
FSM	FSM > Not FSM >	10 65	104.5 106.6	70% 80% \uparrow	10% 11%	+2.4 +4.2 $\uparrow\downarrow$	+10% +28% \uparrow	+6% +4% \downarrow	
FSM Ever	FSM (ever) > Not FSM (ever) >	24 51	105.4 \uparrow 106.7	75% \uparrow 80%	8% 12%	+3.7 \uparrow +4.1 $\uparrow\downarrow$	+22% \uparrow +27% \uparrow	+6% +4%	
Term of Birth	Autumn Term > Spring Term > Summer Term >	22 23 30	106.3 \downarrow 107.1 105.6	77% 83% 77%	23% 9% 3%	+1.8 \downarrow +4.5 \uparrow +5.3 \uparrow	+13% +28% \uparrow +33% \uparrow	+14% \uparrow +1% +0%	
SEN Group	SEN Support > No SEN >	10 65	100.5 107.2 \downarrow	40% 85%	0% 12%	+4.9 \uparrow +3.8 $\uparrow\downarrow$	+24% +26% \uparrow	-0% +5%	
EAL	First language not English > First language English >	48 27	105.8 107.1	77% \uparrow 81%	4% 22% \uparrow	+4.1 \uparrow +3.7 $\uparrow\downarrow$	+29% \uparrow +20% \uparrow	-2% +16% \uparrow	
Mobility	Joined in Y5 or Y6 > Joined before Y5 >	6 69	98.9 \downarrow 106.9 \uparrow	17% 84% \uparrow	0% 12%	+0.6 +4.1 $\uparrow\downarrow$	-6% +27% \uparrow	-0% +5%	
Ethnicity	White > Black Caribbean > Black African > Indian > Pakistani > Bangladeshi > Other Asian > Chinese > Any Other >	20 1 6 13 4 24 1 1 5	106.6 107.5 104.9 105.0 106.4 106.4 101.0 107.5 109.9	80% 100% 67% 54% 100% 83% 100% 100% 100%	25% \uparrow 0% 0% 8% 0% 4% 0% 0% 20%	+4.0 $\uparrow\downarrow$ -0.5 +0.9 +3.7 \uparrow +3.4 +4.5 \uparrow -1.6 +5.8 +7.8 \uparrow	+22% +10% +5% +2% +43% +36% \uparrow +44% +54% +50%	+14% -9% -7% +2% -7% +2% -1% -0% +18% \uparrow	

Subjects

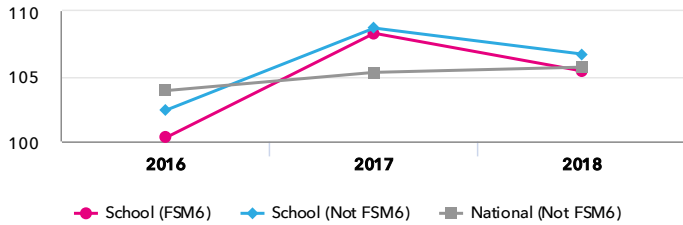
KS2 subject performance 2018

	Actual results			Pupil progress			Actual results over time
	2016	2017	2018	2016	2017	2018	
Number of Pupils / % Matched	75	72	75	92%	88%	93%	
Reading							
% Expected standard+	60% ↓	89% ↑	83%	+1% ↓	+25% ↑	+16% ↑	% Expected standard+ Reading
% Higher standard	19%	44% ↑	21% ↓	+5%	+28% ↑	+1% ↓	
Scaled Score	101 ↓	108 ↑	106 ↓	+0.6 ↓	+6.4 ↑	+2.9 ↓	
Level 4+	-	-	-	-	-	-	
Level 4B+	-	-	-	-	-	-	
Level 5+	-	-	-	-	-	-	
Average Point Score	-	-	-	-	-	-	
Writing							
% Expected standard+	81%	86%	87%	+10%	+18% ↑	+16% ↑	% Expected standard+ Writing
% Higher standard	23% ↓	25%	23%	+13% ↑	+15% ↑	+11% ↑	
Scaled Score	103 ↑	104 ↑	104	+3.3 ↑	+4.3 ↑	+3.5 ↑	
Level 4+	-	-	-	-	-	-	
Level 5+	-	-	-	-	-	-	
Average Point Score	-	-	-	-	-	-	
Maths							
% Expected standard+	60% ↓	89% ↑	89% ↑	-5% ↓	+19% ↑	+20% ↑	% Expected standard+ Maths
% Higher standard	19%	47% ↑	37% ↑	+5%	+33% ↑	+22% ↑	
Scaled Score	102 ↓	109 ↑	107 ↑	+0.7 ↓	+6.3 ↑	+5.0 ↑	
Level 4+	-	-	-	-	-	-	
Level 4B+	-	-	-	-	-	-	
Level 5+	-	-	-	-	-	-	
Average Point Score	-	-	-	-	-	-	
Grammar, Punctuation & Spelling							
% Expected standard+	76% ↓	93% ↑	92% ↑	+10%	+20% ↑	+21% ↑	% Expected standard+ Grammar, Punctuation & Spelling
% Higher standard	37% ↑	63% ↑	55% ↑	+21% ↑	+44% ↑	+33% ↑	
Scaled Score	106	112 ↑	109 ↑	+3.7 ↓	+7.8 ↑	+5.8 ↓	
Science							
% Expected standard+	84%	88%	77%	-	-	-	% Expected standard+ Science
Level 4+	-	-	-	-	-	-	
Level 5+	-	-	-	-	-	-	
Average Point Score	-	-	-	-	-	-	

Disadvantaged pupils

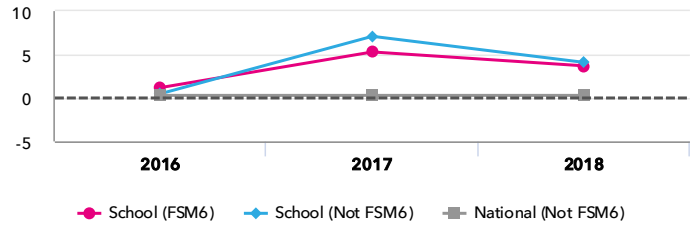
KS2 attainment for disadvantaged pupils 2018

Average Scaled Score (Re, Ma)



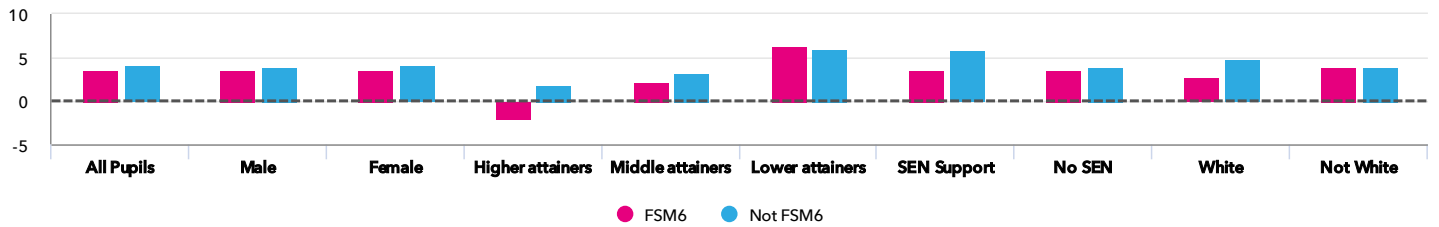
KS2 progress for disadvantaged pupils 2018

Average Scaled Score (Re, Ma)



Progress gap

Average Scaled Score (Re, Ma)

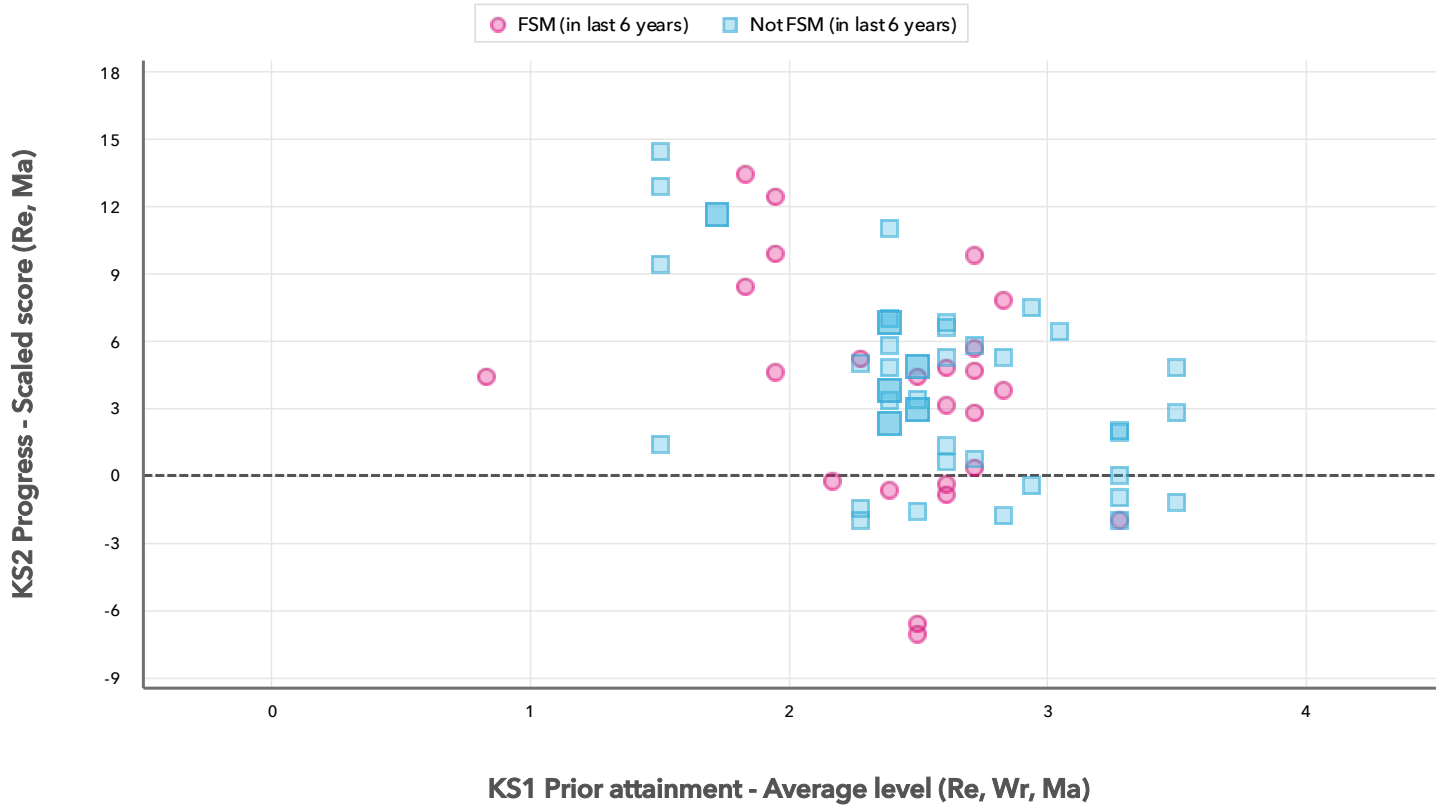


Attainment & progress

Pupils		Attainment			Progress				
		FSM6	Not FSM6	Gap	FSM6	Not FSM6	Gap		
Summary	All Pupils	24	51	105.4 +	106.7	-1.3	3.7 +	4.1 + -	-0.4
Gender	Male	14	24	105.3	107.2	-1.9	3.6	4	-0.4
	Female	10	27	105.7	106.2	-0.5	3.7	4.2	-0.5
Prior Attainment	Higher attainers	1	11	108.5	112.1	-3.6	-2	1.9	-3.9
	Middle attainers	14	15	106.8	107.2	-0.4	2.3	3.2	-0.9
	Lower attainers	9	20	102.9	104.5	-1.6	6.4	6	0.4
SEN Group	SEN Support	4	6	98.6	101.8	-3.2	3.7	5.9	-2.2
	No SEN	20	45	106.8	107.3	-0.5	3.6	3.9	-0.3
Ethnic Group	White	6	14	102.9	108.2	-5.3	2.7	4.8	-2.1
	Not White	18	37	106.3	106.1	0.2	4	3.9	0.1

Scatterplot

KS2 Pupil scatterplot 2018 75 pupils highlighted by Pupil Premium



Context

Context · Year 6 · 2017 / 2018

		Pupils	Proportion	
			School	National
Summary	All Pupils	75	100%	100%
Gender	Male	38	51%	51%
	Female	37	49%	49%
Prior Attainment	Higher attainers	12	16%	31%
	Middle attainers	29	39%	35%
	Lower attainers	29	39%	29%
Pupil Premium	FSM (in last 6 years)	24	32%	30%
	Not FSM (in last 6 years)	51	68%	69%
FSM	FSM	10	13%	15%
	Not FSM	65	87%	85%
FSM Ever	FSM (ever)	24	32%	31%
	Not FSM (ever)	51	68%	69%
Term of Birth	Autumn Term	22	29%	33%
	Spring Term	23	31%	32%
	Summer Term	30	40%	35%
SEN Group	SEN Support	10	13%	15%
	No SEN	65	87%	82%
EAL	First language not English	48	64%	20%
	First language English	27	36%	80%
Mobility	Joined in Y5 or Y6	6	8%	7%
	Joined before Y5	69	92%	93%
Ethnicity	White	20	27%	74%
	Black Caribbean	1	1%	3%
	Black African	6	8%	6%
	Indian	13	17%	3%
	Pakistani	4	5%	4%
	Bangladeshi	24	32%	2%
	Other Asian	1	1%	3%
	Chinese	1	1%	0%
	Any Other	5	7%	4%

Absence · Year 6 · 2017 / 2018

		Pupils	Absence		Persistent absentees	
			School	National	School	National
Summary	All Pupils	75	4%	4%	4%	5%
Gender	Male	38	3%	4%	3%	6%
	Female	37	4%	4%	5%	5%
Prior Attainment	Higher attainers	12	2%	3%	0%	2%
	Middle attainers	29	4%	4%	7%	4%
	Lower attainers	29	4%	5%	3%	10%
Pupil Premium	FSM (in last 6 years)	24	4%	5%	8%	12%
	Not FSM (in last 6 years)	51	3%	3%	2%	3%
FSM	FSM	10	4%	6%	10%	16%
	Not FSM	65	4%	4%	3%	4%
FSM Ever	FSM (ever)	24	4%	5%	8%	11%
	Not FSM (ever)	51	3%	3%	2%	3%
Term of Birth	Autumn Term	22	4%	4%	5%	6%
	Spring Term	23	4%	4%	9%	6%
	Summer Term	30	3%	4%	0%	5%
SEN Group	SEN Support	10	3%	5%	0%	10%
	No SEN	65	4%	4%	5%	4%
EAL	First language not English	48	4%	4%	6%	5%
	First language English	27	3%	4%	0%	6%
Mobility	Joined in Y5 or Y6	6	7%	6%	17%	15%
	Joined before Y5	69	3%	4%	3%	5%
Ethnicity	White	20	4%	4%	0%	6%
	Black Caribbean	1	1%	5%	0%	9%
	Black African	6	4%	3%	17%	3%
	Indian	13	2%	3%	0%	3%
	Pakistani	4	8%	5%	25%	6%
	Bangladeshi	24	4%	5%	4%	5%
	Other Asian	1	7%	4%	0%	4%
	Chinese	1	2%	2%	0%	1%
	Any Other	5	2%	4%	0%	6%