

2018 KS1 School Dashboard

for governors & school leaders

Produce custom dashboards
at fftaspire.org

Park Primary School

LA Newham DFE 3162051 Produced January 2019 Version 1

What it is

Seven easy-to-use reports that help governors and school leaders to evaluate school performance using the latest 2018 DFE school performance indicators.

What it tells you

- What are the strengths and areas for improvement in your school?
- How does attainment and pupil progress compare to the national average over the last three years?
- How are you performing in different subjects?
- Do you have any under-performing groups of pupils?
- How might the context of your school affect performance?
- How does pupil attendance compare to the national average?

About the data shown

1 2 3

Actual results

Actual results for your school, using a range of measures such as averages and thresholds.



Gauges

These display headline indicators and whether actual results and pupils' progress are in line with, or significantly above or below, the national average.

ESTIMATED



1 2 3

Pupil progress

The value added progress that your pupils have made from one key stage to the next. FFT compares your actual results to the estimated results based on the progress of similar pupils nationally.



Statistical significance

Green plus signs and red minus signs highlight where either actual results or pupils' progress is significantly above or below the national average.



Trends

The dashboard analyses school performance over 3-5 years. Any significant year-on-year improvement is highlighted using an up arrow. Significant declines in performance are highlighted with a down arrow.



Strengths & weaknesses

These highlight key pupil groups and subjects where progress is above or below the national average.

Working in partnership with



Data sources

Generated from FFT Aspire which includes data sourced from the DfE (National Pupil Database) and data calculated by FFT. FFT is accredited as a DfE supplier to receive early access to ASP data. Headline performance indicators will be consistent with the DfE School Performance Tables and ASP.

Overview

KS1 Attainment 2018 · Actual results

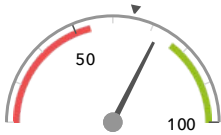
71 pupils

% Expected Standard + (Re, Wr, Ma)

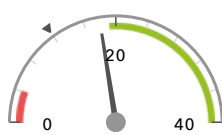
% Higher Standard (Re, Wr, Ma)

72%

18%



In line with the national average (65%) ◀



In line with the national average (12%) ◀

KS1 Progress 2018 · Value Added

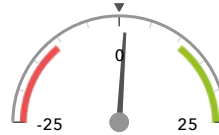
66 matched pupils

% Expected Standard + (Re, Wr, Ma)

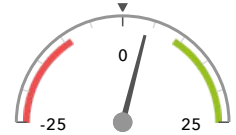
% Higher Standard (Re, Wr, Ma)

+1%

+4%



In line with the national average (0%) ◀



In line with the national average (0%) ◀

KS1 higher and lower performing pupil groups 2018

| | Higher performing | Lower performing |
|------------------------------------------------------|----------------------------------------------------------------|--------------------------------------------------------------|
| Overall achievement pupil progress | Summer Term (24) SEN Support (5) Bangladeshi (18) | Autumn Term (24) White (11) ↓ |
| KS1 reading achievement pupil progress | Summer Term (24) Spring Term (18) Bangladeshi (18) | Autumn Term (24) Black African (9) Male (30) |
| KS1 writing achievement pupil progress | Summer Term (24) Indian (16) First language English (36) | White (11) FSM (in last 6 years) (11) Autumn Term (24) |
| KS1 mathematics achievement pupil progress | Summer Term (24) Indian (16) Higher attainers (32) | FSM (5) FSM (in last 6 years) (11) Autumn Term (24) |

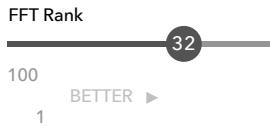
Attainment & progress

KS1 Attainment 2018

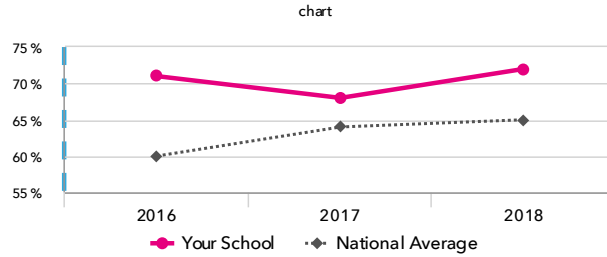
71 pupils

% Expected Standard + (Re, Wr, Ma)

72%

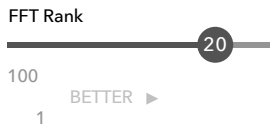


In line with the national average (65%)

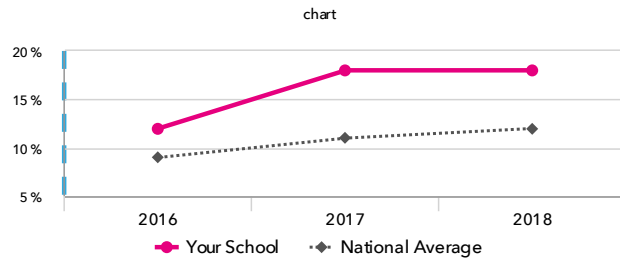


% Higher Standard (Re, Wr, Ma)

18%



In line with the national average (12%)

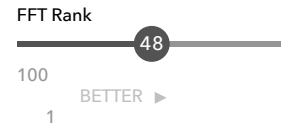


KS1 Progress 2018

66 matched pupils

% Expected Standard + (Re, Wr, Ma)

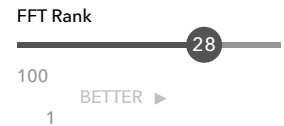
+1%



In line with the national average (0%)

% Higher Standard (Re, Wr, Ma)

+4%



In line with the national average (0%)

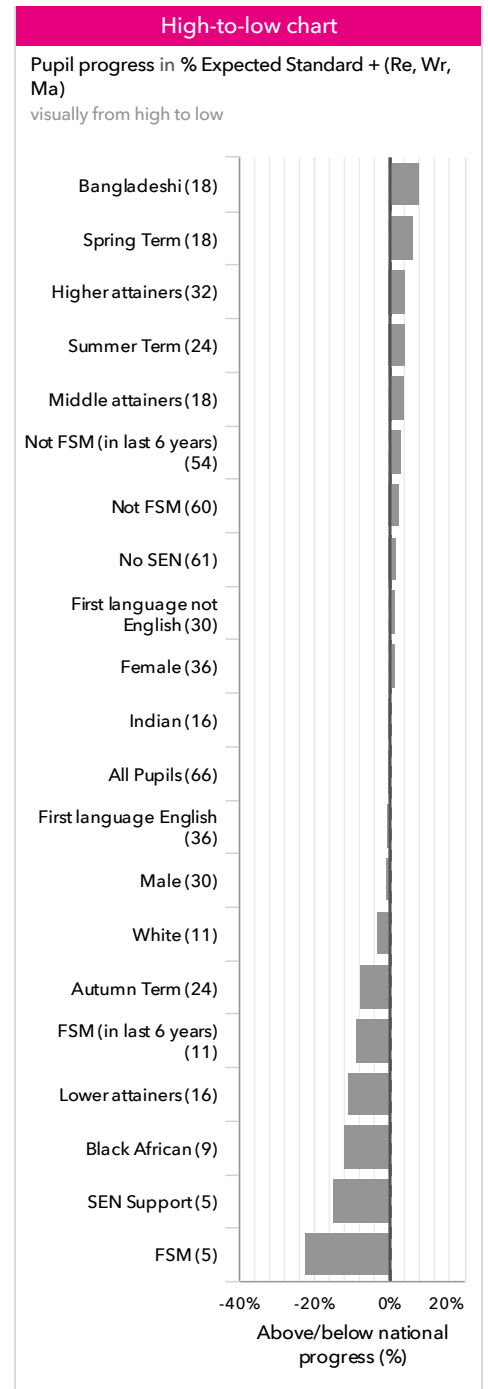
KS1 performance summary

| | Actual results | | | Pupil progress | | |
|------------------------------------|----------------|------|------|---------------------------------------|-----------------------------------------|--------------------------------------|
| | 2016 | 2017 | 2018 | 2016 | 2017 | 2018 |
| Number of Pupils / % Matched | 73 | 72 | 71 | 86% | 92% | 93% |
| % Expected Standard + (Re, Wr, Ma) | 71% | 68% | 72% | +10% | +8% | +1% |
| % Higher Standard (Re, Wr, Ma) | 12% | 18% | 18% | -2% | +5% | +4% |
| % Expected Standard + Reading | 77% | 74% | 79% | +4% | +2% | -1% |
| % Higher Standard Reading | 19% | 33% | 30% | -12% - | +7% ↑ | -1% |
| % Expected Standard + Writing | 75% | 78% | 73% | +10% | +13% + | -2% ↓ |
| % Higher Standard Writing | 18% | 24% | 21% | -1% | +6% | +2% |
| % Expected Standard + Maths | 78% | 76% | 79% | +6% | +2% | -1% |
| % Higher Standard Maths | 25% | 29% | 28% | +1% | +7% | +2% |
| % Level 2+ (Re, Wr, Ma) | - | - | - | - | - | - |
| % Level 2B+ (Re, Wr, Ma) | - | - | - | - | - | - |
| % Level 3+ (Re, Wr, Ma) | - | - | - | - | - | - |
| Average Point Score (Re, Wr, Ma) | - | - | - | - | - | - |

Pupil groups

KS1 Pupil groups performance 2018

| | Pupils | Actual results | | Pupil progress | | |
|-------------------------|----------------------------|------------------------------------|------------------------------------------|------------------------------------------|--------------------------------|------|
| | | % Expected Standard + (Re, Wr, Ma) | % Higher Standard (Re, Wr, Ma) | % Expected Standard + (Re, Wr, Ma) | % Higher Standard (Re, Wr, Ma) | |
| Summary | All Pupils | 71 | 72% | 18% | +1% | +4% |
| Gender | Male | 32 | 66% | 16% | -1% | +1% |
| | Female | 39 | 77% | 21% | +2% | +6% |
| Prior Attainment | Higher attainers | 32 | 97% | 38% | +4% | +9% |
| | Middle attainers | 18 | 83% | 6% | +4% | -2% |
| | Lower attainers | 16 | 13% | 0% | -11% | -0% |
| Pupil Premium | FSM (in last 6 years) | 12 | 50% | 8% | -9% | +0% |
| | Not FSM (in last 6 years) | 56 | 79% | 21% | +3% | +4% |
| FSM | FSM | 5 | 20% | 20% | -22% | +11% |
| | Not FSM | 63 | 78% | 19% | +3% | +3% |
| Term of Birth | Summer Term | 26 | 62% | 19% + | +4% | +8% |
| | Spring Term | 20 | 90% + | 15% | +7% | +0% |
| | Autumn Term | 25 | 68% | 20% | -8% | +2% |
| SEN Group | SEN Support | 5 | 0% | 0% | -15% | -0% |
| | No SEN | 66 | 77% | 20% | +2% | +4% |
| EAL | First language not English | 32 | 69% | 6% | +2% | -3% |
| | First language English | 39 | 74% | 28% + | -0% | +10% |
| Ethnicity | White | 12 | 75% | 8% | -3% | -7% |
| | Black Caribbean | 3 | 100% | 33% | +6% | +15% |
| | Black African | 9 | 67% | 44% + | -12% | +17% |
| | Indian | 17 | 82% | 35% | +1% | +13% |
| | Pakistani | 4 | 75% | 0% | +15% | -3% |
| | Bangladeshi | 18 | 72% | 6% | +8% | -3% |
| | Other Asian | 3 | 33% | 0% | +16% | -0% |
| | Any Other | 3 | 67% | 0% | -30% | -7% |
| | No Ethnicity Data | 2 | 0% | 0% | -30% | -0% |



Subjects

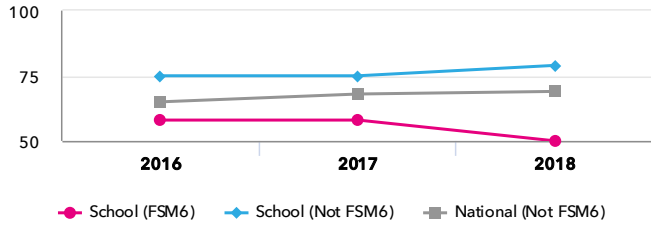
KS1 subject performance 2018

| | Actual results | | | Pupil progress | | | Actual results over time | | |
|------------------------------|----------------|------|------|---------------------------------------|-----------------------------------------|--------------------------------------|--------------------------------------------|--|--|
| | 2016 | 2017 | 2018 | 2016 | 2017 | 2018 | | | |
| Number of Pupils / % Matched | 73 | 72 | 71 | 86% | 92% | 93% | | | |
| Reading | | | | | | | | | |
| % Expected Standard + | 77% | 74% | 79% | +4% | +2% | -1% | % Expected Standard + Reading chart | | |
| % Higher Standard | 19% | 33% | 30% | -12% - | +7% ↑ | -1% | | | |
| % Level 2+ | - | - | - | - | - | - | | | |
| % Level 2B+ | - | - | - | - | - | - | | | |
| % Level 3+ | - | - | - | - | - | - | | | |
| Average Point Score | - | - | - | - | - | - | | | |
| Writing | | | | | | | | | |
| % Expected Standard + | 75% | 78% | 73% | +10% | +13% + | -2% ↓ | % Expected Standard + Writing chart | | |
| % Higher Standard | 18% | 24% | 21% | -1% | +6% | +2% | | | |
| % Level 2+ | - | - | - | - | - | - | | | |
| % Level 2B+ | - | - | - | - | - | - | | | |
| % Level 3+ | - | - | - | - | - | - | | | |
| Average Point Score | - | - | - | - | - | - | | | |
| Maths | | | | | | | | | |
| % Expected Standard + | 78% | 76% | 79% | +6% | +2% | -1% | % Expected Standard + Maths chart | | |
| % Higher Standard | 25% | 29% | 28% | +1% | +7% | +2% | | | |
| % Level 2+ | - | - | - | - | - | - | | | |
| % Level 2B+ | - | - | - | - | - | - | | | |
| % Level 3+ | - | - | - | - | - | - | | | |
| Average Point Score | - | - | - | - | - | - | | | |
| Science | | | | | | | | | |
| % Expected Standard + | 78% | 81% | 89% | - | - | - | % Expected Standard + Science chart | | |
| % Level 2+ | - | - | - | - | - | - | | | |
| % Level 3+ | - | - | - | - | - | - | | | |
| Average Point Score | - | - | - | - | - | - | | | |

Disadvantaged pupils

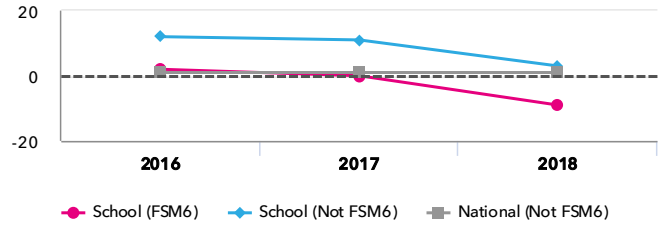
KS1 attainment for disadvantaged pupils 2018

% Expected Standard + (Re, Wr, Ma)

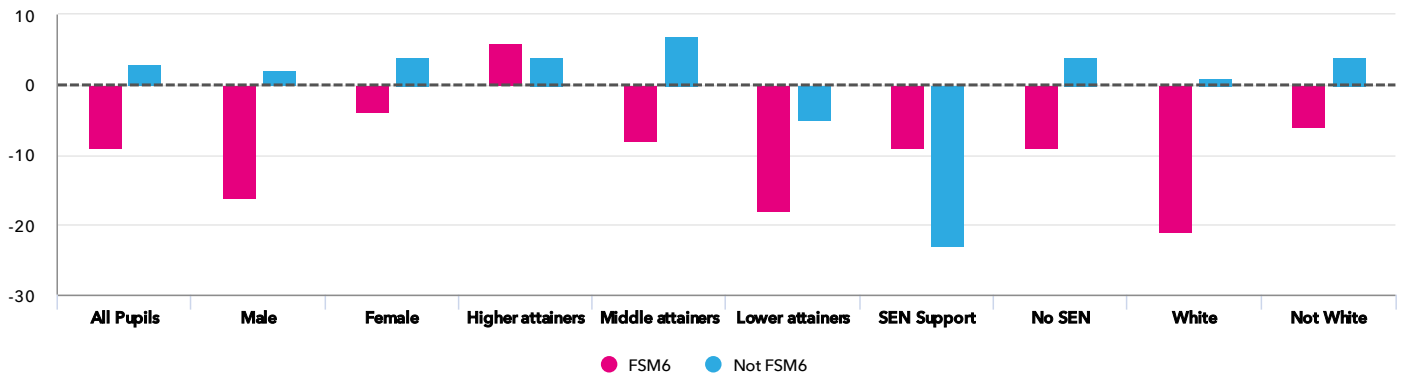


KS1 progress for disadvantaged pupils 2018

% Expected Standard + (Re, Wr, Ma)



Progress gap % Expected Standard + (Re, Wr, Ma)

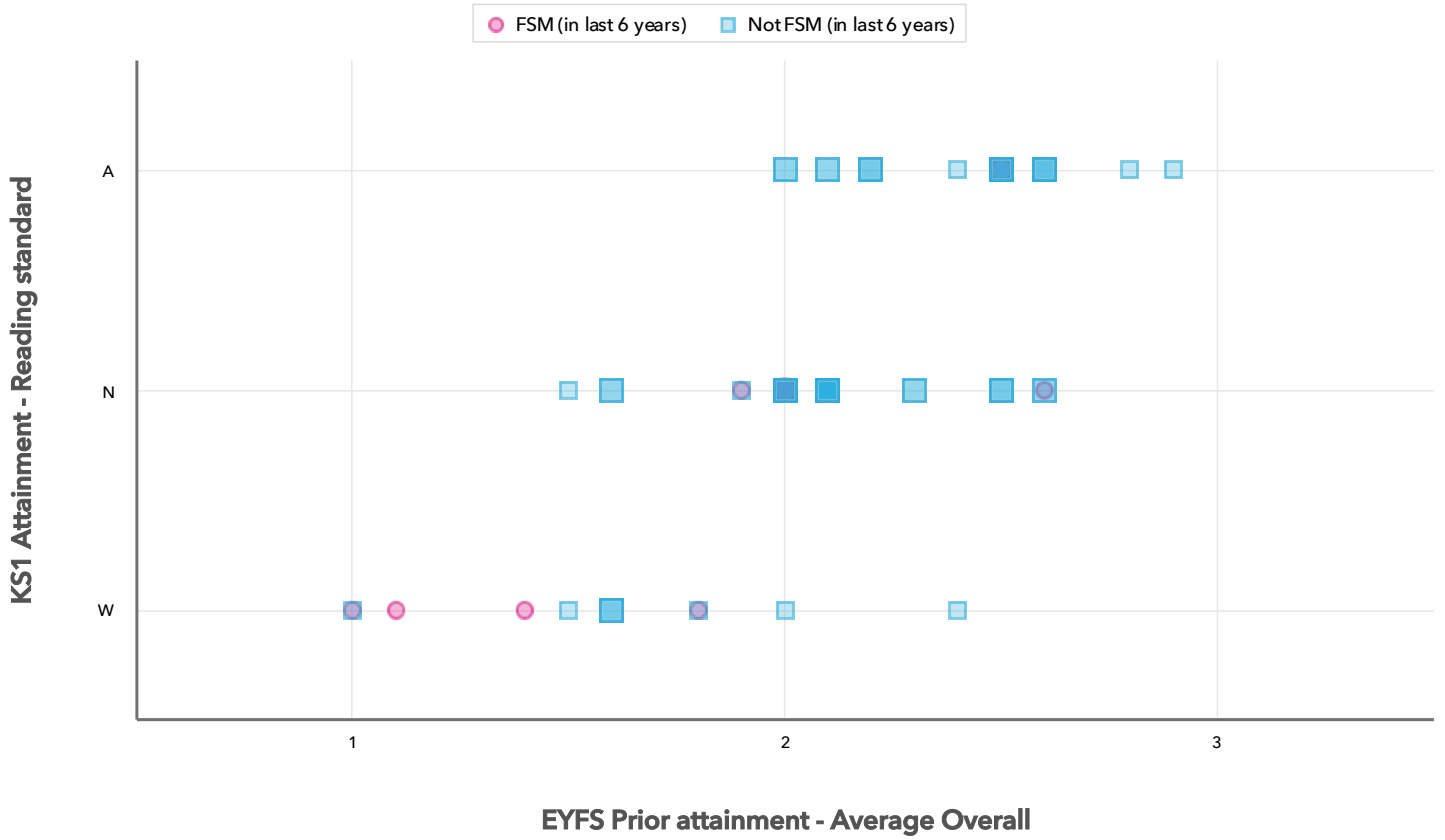


Attainment & progress

| Pupils | Attainment | | | Progress | | | | | |
|-------------------------|------------------|----------|------------------------------------|----------|-----|------|----------|------|------|
| | FSM6 | Not FSM6 | % Expected Standard + (Re, Wr, Ma) | | | FSM6 | Not FSM6 | Gap | |
| | | | FSM6 | Not FSM6 | Gap | | | | |
| Summary | All Pupils | 12 | 56 | 50% | 79% | -29% | -9% | 3% | -12% |
| Gender | Male | 5 | 26 | 20% | 77% | -57% | -16% | 2% | -18% |
| | Female | 7 | 30 | 71% | 80% | -9% | -4% | 4% | -8% |
| Prior Attainment | Higher attainers | 3 | 29 | 100% | 97% | 3% | 6% | 4% | 2% |
| | Middle attainers | 3 | 15 | 67% | 87% | -20% | -8% | 7% | -15% |
| | Lower attainers | 5 | 10 | 0% | 20% | -20% | -18% | -5% | -13% |
| SEN Group | SEN Support | 3 | 2 | 0% | 0% | 0% | -9% | -23% | 14% |
| | No SEN | 9 | 54 | 67% | 81% | -14% | -9% | 4% | -13% |
| Ethnic Group | White | 2 | 10 | 50% | 80% | -30% | -21% | 1% | -22% |
| | Not White | 10 | 46 | 50% | 78% | -28% | -6% | 4% | -10% |

Scatterplot

KS1 Pupil scatterplot 2018 71 pupils highlighted by Pupil Premium



Context

Context · Year 2 · 2017 / 2018

| | | Pupils | Proportion | |
|-------------------------|----------------------------|--------|------------|----------|
| | | | School | National |
| Summary | All Pupils | 71 | 100% | 100% |
| Gender | Male | 32 | 45% | 51% |
| | Female | 39 | 55% | 49% |
| Prior Attainment | Higher attainers | 32 | 45% | 35% |
| | Middle attainers | 18 | 25% | 32% |
| | Lower attainers | 16 | 23% | 29% |
| Pupil Premium | FSM (in last 6 years) | 12 | 17% | 20% |
| | Not FSM (in last 6 years) | 56 | 79% | 79% |
| FSM | FSM | 5 | 7% | 14% |
| | Not FSM | 63 | 89% | 86% |
| Term of Birth | Summer Term | 26 | 37% | 34% |
| | Spring Term | 20 | 28% | 32% |
| | Autumn Term | 25 | 35% | 34% |
| SEN Group | SEN Support | 5 | 7% | 13% |
| | No SEN | 66 | 93% | 84% |
| EAL | First language not English | 32 | 45% | 21% |
| | First language English | 39 | 55% | 79% |
| Ethnicity | White | 12 | 17% | 74% |
| | Black Caribbean | 3 | 4% | 3% |
| | Black African | 9 | 13% | 5% |
| | Indian | 17 | 24% | 3% |
| | Pakistani | 4 | 6% | 4% |
| | Bangladeshi | 18 | 25% | 2% |
| | Other Asian | 3 | 4% | 3% |
| | Any Other | 3 | 4% | 4% |
| | No Ethnicity Data | 2 | 3% | 0% |

Absence · Year 2 · Autumn 2014 - Summer 2017

| | | Pupils | Absence | | Persistent absentees | |
|-------------------------|----------------------------|--------|---------|----------|----------------------|----------|
| | | | School | National | School | National |
| Summary | All Pupils | 71 | 4% | 4% | 4% | 8% |
| Gender | Male | 32 | 4% | 4% | 3% | 9% |
| | Female | 39 | 4% | 4% | 5% | 8% |
| Prior Attainment | Higher attainers | 32 | 3% | 3% | 0% | 4% |
| | Middle attainers | 18 | 4% | 4% | 6% | 7% |
| | Lower attainers | 16 | 6% | 6% | 13% | 14% |
| Pupil Premium | FSM (in last 6 years) | 12 | 5% | 6% | 8% | 17% |
| | Not FSM (in last 6 years) | 56 | 4% | 4% | 2% | 6% |
| FSM | FSM | 5 | 7% | 6% | 20% | 19% |
| | Not FSM | 63 | 4% | 4% | 2% | 7% |
| Term of Birth | Summer Term | 26 | 4% | 4% | 4% | 9% |
| | Spring Term | 20 | 4% | 4% | 5% | 8% |
| | Autumn Term | 25 | 4% | 4% | 4% | 8% |
| SEN Group | SEN Support | 5 | 3% | 6% | 0% | 15% |
| | No SEN | 66 | 4% | 4% | 5% | 7% |
| EAL | First language not English | 32 | 4% | 5% | 0% | 10% |
| | First language English | 39 | 4% | 4% | 8% | 8% |
| Ethnicity | White | 12 | 3% | 4% | 0% | 8% |
| | Black Caribbean | 3 | 1% | 5% | 0% | 13% |
| | Black African | 9 | 1% | 3% | 0% | 6% |
| | Indian | 17 | 4% | 4% | 0% | 7% |
| | Pakistani | 4 | 8% | 6% | 25% | 13% |
| | Bangladeshi | 18 | 4% | 6% | 0% | 14% |
| | Other Asian | 3 | 5% | 5% | 0% | 9% |
| | Any Other | 3 | 8% | 5% | 33% | 10% |
| | No Ethnicity Data | 2 | 19% | 11% | 100% | 40% |