

# 2018 KS2 School Dashboard for governors & school leaders

Produce custom dashboards  
at [fftaspire.org](http://fftaspire.org)

## Park Primary School

LA Newham DFE 3162051 Produced January 2019 Version 2

### What it is

Seven easy-to-use reports that help governors and school leaders to evaluate school performance using the latest 2018 DFE school performance indicators.

### What it tells you

- What are the strengths and areas for improvement in your school?
- How does attainment and pupil progress compare to the national average over the last three years?
- How are you performing in different subjects?
- Do you have any under-performing groups of pupils?
- How might the context of your school affect performance?
- How does pupil attendance compare to the national average?

### About the data shown

1 2 3

#### Actual results

Actual results for your school, using a range of measures such as averages and thresholds.



#### Gauges

These display headline indicators and whether actual results and pupils' progress are in line with, or significantly above or below, the national average.

ESTIMATED



1 2 3

#### Pupil progress

The value added progress that your pupils have made from one key stage to the next. FFT compares your actual results to the estimated results based on the progress of similar pupils nationally.



#### Statistical significance

Green plus signs and red minus signs highlight where either actual results or pupils' progress is significantly above or below the national average.



#### Trends

The dashboard analyses school performance over 3-5 years. Any significant year-on-year improvement is highlighted using an up arrow. Significant declines in performance are highlighted with a down arrow.



#### Strengths & weaknesses

These highlight key pupil groups and subjects where progress is above or below the national average.

### Working in partnership with



### Data sources

Generated from FFT Aspire which includes data sourced from the DfE (National Pupil Database) and data calculated by FFT. FFT is accredited as a DfE supplier to receive early access to ASP data. Headline performance indicators will be consistent with the DfE School Performance Tables and ASP.

# Overview

## KS2 Attainment 2018 · Actual results

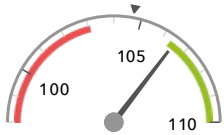
74 pupils

Average Scaled Score (Re, Ma)

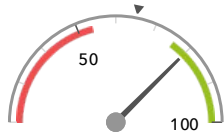
% Expected standard+ (Re, Wr, Ma)

106.5 + ↓

80% +



Significantly above the national average (104.7) ↓



Significantly above the national average (65%) ↓

## KS2 Progress 2018 · Value Added

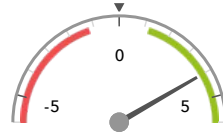
70 matched pupils

Average Scaled Score (Re, Ma)

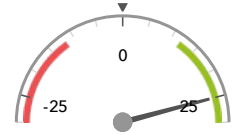
% Expected standard+ (Re, Wr, Ma)

+4.0 + ↓

+25% +



Significantly above the national average (0) ↓



Significantly above the national average (0%) ↓

## KS2 higher and lower performing pupil groups 2018

	Higher performing	Lower performing
<b>Overall achievement</b> pupil progress	Lower attainers (8) <span style="color: green;">+</span> Any Other (5) <span style="color: green;">+</span> Summer Term (28) <span style="color: green;">+</span>	
<b>KS2 reading achievement</b> pupil progress	Lower attainers (8) <span style="color: green;">+</span> Any Other (5) Summer Term (28) <span style="color: green;">+</span>	Autumn Term (22) <span style="color: green;">↓</span>
<b>KS2 writing achievement</b> pupil progress	Lower attainers (8) <span style="color: green;">+</span> Any Other (5) Summer Term (28) <span style="color: green;">+</span>	Black African (6)
<b>KS2 mathematics achievement</b> pupil progress	Any Other (5) <span style="color: green;">+</span> Lower attainers (8) <span style="color: green;">+</span> SEN Support (9) <span style="color: green;">+</span>	
<b>KS2 grammar, punctuation &amp; spelling achievement</b> pupil progress	Lower attainers (8) <span style="color: green;">+</span> Bangladeshi (23) <span style="color: green;">+</span> Summer Term (28) <span style="color: green;">+</span>	

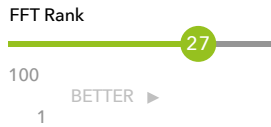
# Attainment & progress

## KS2 Attainment 2018

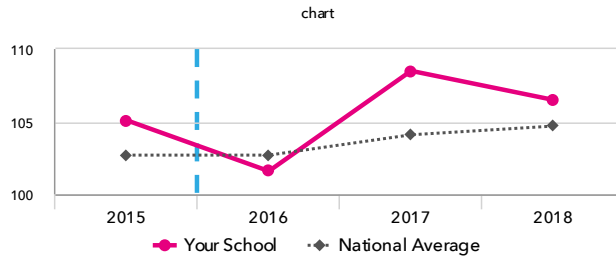
74 pupils

Average Scaled Score (Re, Ma)

106.5 + ↓



Significantly above the national average (104.7)

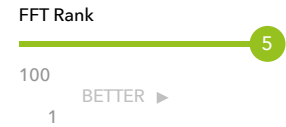


## KS2 Progress 2018

70 matched pupils

Average Scaled Score (Re, Ma)

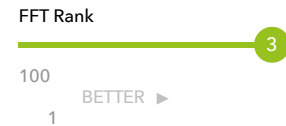
+4.0 + ↓



Significantly above the national average (0)

% Expected standard+ (Re, Wr, Ma)

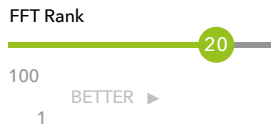
+25% +



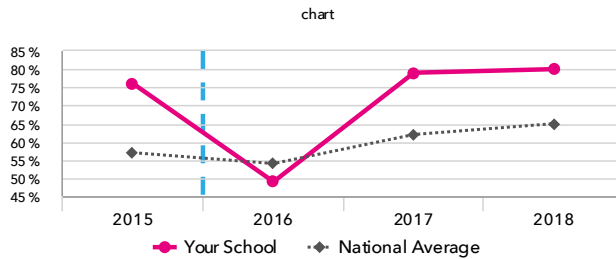
Significantly above the national average (0%)

% Expected standard+ (Re, Wr, Ma)

80% +



Significantly above the national average (65%)



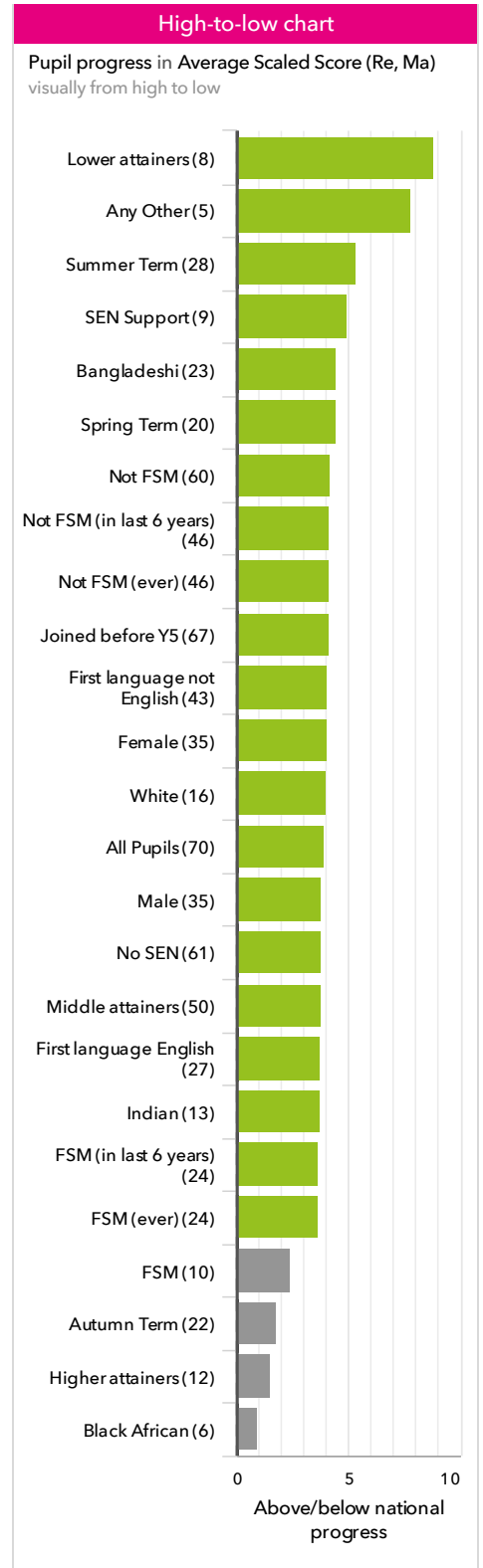
## KS2 performance summary

	Actual results			Pupil progress		
	2016	2017	2018	2016	2017	2018
Number of Pupils / % Matched	75	72	74	92%	88%	95%
% Expected standard+ (Re, Wr, Ma)	49% <span style="color: grey;">↓</span>	79% <span style="color: green;">+</span> <span style="color: green;">↑</span>	80% <span style="color: green;">+</span>	+4% <span style="color: grey;">↓</span>	+31% <span style="color: green;">+</span> <span style="color: green;">↑</span>	+25% <span style="color: green;">+</span>
% Higher standard (Re, Wr, Ma)	7%	18% <span style="color: green;">+</span> <span style="color: green;">↑</span>	11%	+3%	+15% <span style="color: green;">+</span>	+5%
Average Scaled Score (Re, GPS, Ma)	102.8 <span style="color: grey;">↓</span>	109.4 <span style="color: green;">+</span> <span style="color: green;">↑</span>	107.4 <span style="color: green;">+</span> <span style="color: grey;">↓</span>	+1.5 <span style="color: green;">+</span> <span style="color: grey;">↓</span>	+6.7 <span style="color: green;">+</span> <span style="color: green;">↑</span>	+4.7 <span style="color: green;">+</span> <span style="color: grey;">↓</span>
Average Scaled Score (Re, Ma)	101.6 <span style="color: grey;">↓</span>	108.5 <span style="color: green;">+</span> <span style="color: green;">↑</span>	106.5 <span style="color: green;">+</span> <span style="color: grey;">↓</span>	+0.8 <span style="color: grey;">↓</span>	+6.3 <span style="color: green;">+</span> <span style="color: green;">↑</span>	+4.0 <span style="color: green;">+</span> <span style="color: grey;">↓</span>
% Expected standard+ Reading	60% <span style="color: grey;">↓</span>	89% <span style="color: green;">+</span> <span style="color: green;">↑</span>	84%	+1% <span style="color: grey;">↓</span>	+25% <span style="color: green;">+</span> <span style="color: green;">↑</span>	+16% <span style="color: green;">+</span>
% Higher standard Reading	19%	44% <span style="color: green;">+</span> <span style="color: green;">↑</span>	22% <span style="color: grey;">↓</span>	+5%	+28% <span style="color: green;">+</span> <span style="color: green;">↑</span>	+1% <span style="color: grey;">↓</span>
Scaled Score Reading	100.8 <span style="color: grey;">↓</span>	108.2 <span style="color: green;">+</span> <span style="color: green;">↑</span>	105.6 <span style="color: grey;">↓</span>	+0.6 <span style="color: grey;">↓</span>	+6.4 <span style="color: green;">+</span> <span style="color: green;">↑</span>	+2.9 <span style="color: green;">+</span> <span style="color: grey;">↓</span>
% Expected standard+ Writing	81%	86%	88%	+10%	+18% <span style="color: green;">+</span>	+15% <span style="color: green;">+</span>
% Higher standard Writing	23% <span style="color: grey;">↓</span>	25%	23%	+13% <span style="color: green;">+</span>	+15% <span style="color: green;">+</span>	+11% <span style="color: green;">+</span>
Scaled Score Writing	102.9 <span style="color: green;">+</span>	103.5 <span style="color: green;">+</span>	103.7	+3.3 <span style="color: green;">+</span>	+4.3 <span style="color: green;">+</span>	+3.5 <span style="color: green;">+</span>
% Expected standard+ Maths	60% <span style="color: grey;">↓</span>	89% <span style="color: green;">+</span> <span style="color: green;">↑</span>	91% <span style="color: green;">+</span>	-5% <span style="color: grey;">↓</span>	+19% <span style="color: green;">+</span> <span style="color: green;">↑</span>	+20% <span style="color: green;">+</span>
% Higher standard Maths	19%	47% <span style="color: green;">+</span> <span style="color: green;">↑</span>	38% <span style="color: green;">+</span>	+5%	+33% <span style="color: green;">+</span> <span style="color: green;">↑</span>	+22% <span style="color: green;">+</span>
Scaled Score Maths	102.5 <span style="color: grey;">↓</span>	108.9 <span style="color: green;">+</span> <span style="color: green;">↑</span>	107.3 <span style="color: green;">+</span>	+0.7 <span style="color: grey;">↓</span>	+6.3 <span style="color: green;">+</span> <span style="color: green;">↑</span>	+5.0 <span style="color: green;">+</span>
% Expected standard+ Grammar, Punctuation & Spelling	76% <span style="color: grey;">↓</span>	93% <span style="color: green;">+</span> <span style="color: green;">↑</span>	93% <span style="color: green;">+</span>	+10%	+20% <span style="color: green;">+</span>	+21% <span style="color: green;">+</span>
% Higher standard Grammar, Punctuation & Spelling	37% <span style="color: green;">+</span>	63% <span style="color: green;">+</span> <span style="color: green;">↑</span>	55% <span style="color: green;">+</span>	+21% <span style="color: green;">+</span>	+44% <span style="color: green;">+</span> <span style="color: green;">↑</span>	+33% <span style="color: green;">+</span>
Scaled Score Grammar, Punctuation & Spelling	105.6	111.6 <span style="color: green;">+</span> <span style="color: green;">↑</span>	109.3 <span style="color: green;">+</span> <span style="color: grey;">↓</span>	+3.7 <span style="color: green;">+</span> <span style="color: grey;">↓</span>	+7.8 <span style="color: green;">+</span> <span style="color: green;">↑</span>	+5.8 <span style="color: green;">+</span> <span style="color: grey;">↓</span>
% Expected standard+ Science	84%	88%	78%	-	-	-

# Pupil groups

## KS2 Pupil groups performance 2018

	Pupils	Actual results			Pupil progress			
		Average Scaled Score (Re, Ma)	% Expected standard+ (Re, Wr, Ma)	% Higher standard (Re, Wr, Ma)	Average Scaled Score (Re, Ma)	% Expected standard+ (Re, Wr, Ma)	% Higher standard (Re, Wr, Ma)	
<b>Summary</b>	All Pupils	74	106.5 <span>+</span> <span>↓</span>	80% <span>+</span>	11%	+4.0 <span>+</span> <span>↓</span>	+25% <span>+</span>	+5%
<b>Gender</b>	Male	37	106.8 <span>+</span>	78% <span>+</span>	11%	+3.8 <span>+</span>	+20% <span>+</span>	+5%
	Female	37	106.1 <span>↓</span>	81%	11%	+4.1 <span>+</span> <span>↓</span>	+30% <span>+</span>	+4%
<b>DFE Prior Attainment</b>	Higher attainers	12	111.8 <span>↓</span>	100%	42%	+1.5 <span>↓</span>	+4%	+15%
	Middle attainers	50	106.4 <span>+</span> <span>↓</span>	82% <span>+</span>	4%	+3.8 <span>+</span> <span>↓</span>	+28% <span>+</span>	+3%
	Lower attainers	8	100.3 <span>+</span>	50% <span>+</span>	0%	+8.8 <span>+</span>	+41% <span>+</span>	-0%
<b>Pupil Premium</b>	FSM (in last 6 years)	24	105.4 <span>+</span>	75% <span>+</span>	8%	+3.7 <span>+</span>	+22% <span>+</span>	+6%
	Not FSM (in last 6 years)	50	106.9	82%	12%	+4.1 <span>+</span> <span>↓</span>	+27% <span>+</span>	+4%
<b>FSM</b>	FSM	10	104.5	70%	10%	+2.4	+10%	+6%
	Not FSM	64	106.8	81% <span>+</span>	11%	+4.2 <span>+</span> <span>↓</span>	+28% <span>+</span>	+4% <span>↓</span>
<b>FSM Ever</b>	FSM (ever)	24	105.4 <span>+</span>	75% <span>+</span>	8%	+3.7 <span>+</span>	+22% <span>+</span>	+6%
	Not FSM (ever)	50	106.9	82%	12%	+4.1 <span>+</span> <span>↓</span>	+27% <span>+</span>	+4%
<b>Term of Birth</b>	Autumn Term	22	106.3 <span>↓</span>	77%	23%	+1.8 <span>↓</span>	+13%	+14% <span>+</span>
	Spring Term	23	107.1	83%	9%	+4.4 <span>+</span>	+27% <span>+</span>	+1%
	Summer Term	29	106.0	79% <span>+</span>	3%	+5.3 <span>+</span>	+33% <span>+</span>	+0%
<b>SEN Group</b>	SEN Support	10	100.5	40%	0%	+4.9 <span>+</span>	+24%	-0%
	No SEN	64	107.4	86% <span>+</span>	13%	+3.8 <span>+</span> <span>↓</span>	+25% <span>+</span>	+5%
<b>EAL</b>	First language not English	47	106.1	79%	4%	+4.1 <span>+</span>	+28% <span>+</span>	-3%
	First language English	27	107.1	81%	22% <span>+</span>	+3.7 <span>+</span> <span>↓</span>	+20% <span>+</span>	+16% <span>+</span>
<b>Mobility</b>	Joined in Y5 or Y6	5	100.0 <span>↓</span>	20%	0%	+0.6	-7%	-0%
	Joined before Y5	69	106.9 <span>+</span>	84% <span>+</span>	12%	+4.1 <span>+</span> <span>↓</span>	+27% <span>+</span>	+5%
<b>Ethnicity</b>	White	19	107.3	84%	26% <span>+</span>	+4.0 <span>+</span> <span>↓</span>	+22%	+14%
	Black Caribbean	1	107.5	100%	0%	-0.5	+10%	-9%
	Black African	6	104.9	67%	0%	+0.9	+5%	-7%
	Indian	13	105.0	54%	8%	+3.7 <span>+</span>	+2%	+2%
	Pakistani	4	106.4	100%	0%	+3.4	+43%	-7%
	Bangladeshi	24	106.4	83%	4%	+4.5 <span>+</span>	+36% <span>+</span>	+2%
	Other Asian	1	101.0	100%	0%	-1.6	+44%	-1%
	Chinese	1	107.5	100%	0%	+5.8	+54%	-0%
	Any Other	5	109.9	100%	20%	+7.8 <span>+</span>	+49%	+18% <span>+</span>



# Subjects

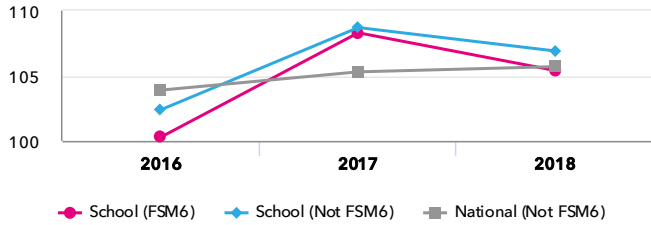
## KS2 subject performance 2018

	Actual results			Pupil progress			Actual results over time		
	2016	2017	2018	2016	2017	2018	chart		
Number of Pupils / % Matched	75	72	74	92%	88%	95%			
<b>Reading</b>									
% Expected standard+	60% ↓	89% ↑	84%	+1% ↓	+25% ↑	+16% ↑	% Expected standard+ Reading chart 		
% Higher standard	19%	44% ↑	22% ↓	+5%	+28% ↑	+1% ↓			
Scaled Score	101 ↓	108 ↑	106 ↓	+0.6 ↓	+6.4 ↑	+2.9 ↓			
<b>Writing</b>									
% Expected standard+	81%	86%	88%	+10%	+18% ↑	+15% ↑	% Expected standard+ Writing chart 		
% Higher standard	23% ↓	25%	23%	+13% ↑	+15% ↑	+11% ↑			
Scaled Score	103 ↑	104 ↑	104	+3.3 ↑	+4.3 ↑	+3.5 ↑			
<b>Maths</b>									
% Expected standard+	60% ↓	89% ↑	91% ↑	-5% ↓	+19% ↑	+20% ↑	% Expected standard+ Maths chart 		
% Higher standard	19%	47% ↑	38% ↑	+5%	+33% ↑	+22% ↑			
Scaled Score	102 ↓	109 ↑	107 ↑	+0.7 ↓	+6.3 ↑	+5.0 ↑			
<b>Grammar, Punctuation &amp; Spelling</b>									
% Expected standard+	76% ↓	93% ↑	93% ↑	+10%	+20% ↑	+21% ↑	% Expected standard+ Grammar, Punctuation & Spelling chart 		
% Higher standard	37% ↑	63% ↑	55% ↑	+21% ↑	+44% ↑	+33% ↑			
Scaled Score	106	112 ↑	109 ↑	+3.7 ↓	+7.8 ↑	+5.8 ↓			
<b>Science</b>									
% Expected standard+	84%	88%	78%	-	-	-	% Expected standard+ Science chart 		

# Disadvantaged pupils

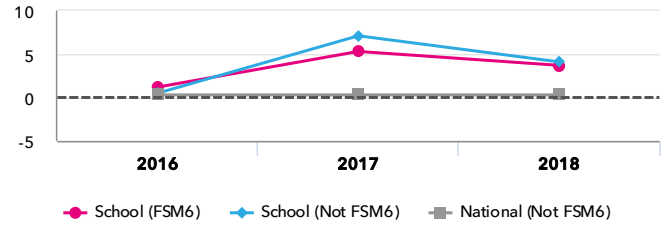
## KS2 attainment for disadvantaged pupils 2018

Average Scaled Score (Re, Ma)



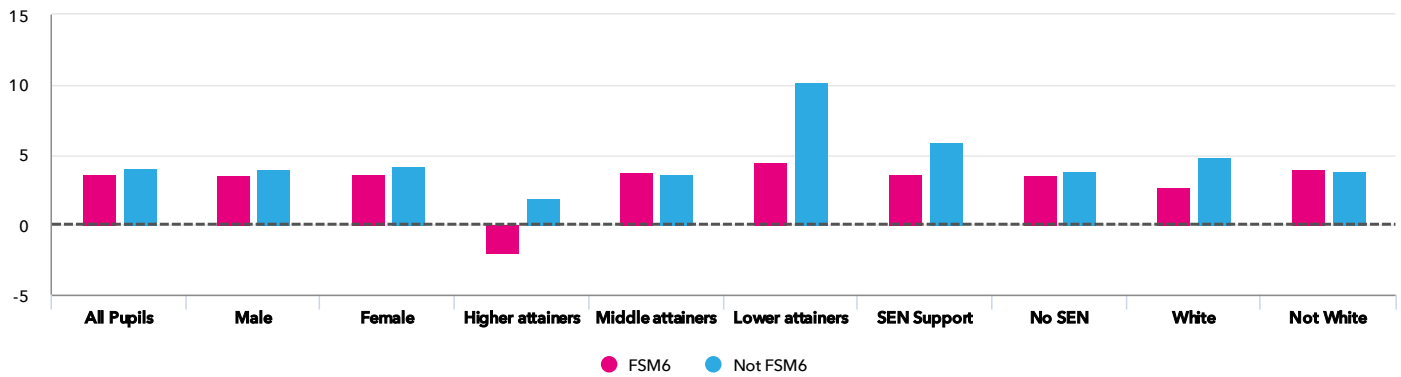
## KS2 progress for disadvantaged pupils 2018

Average Scaled Score (Re, Ma)



## Progress gap

Average Scaled Score (Re, Ma)

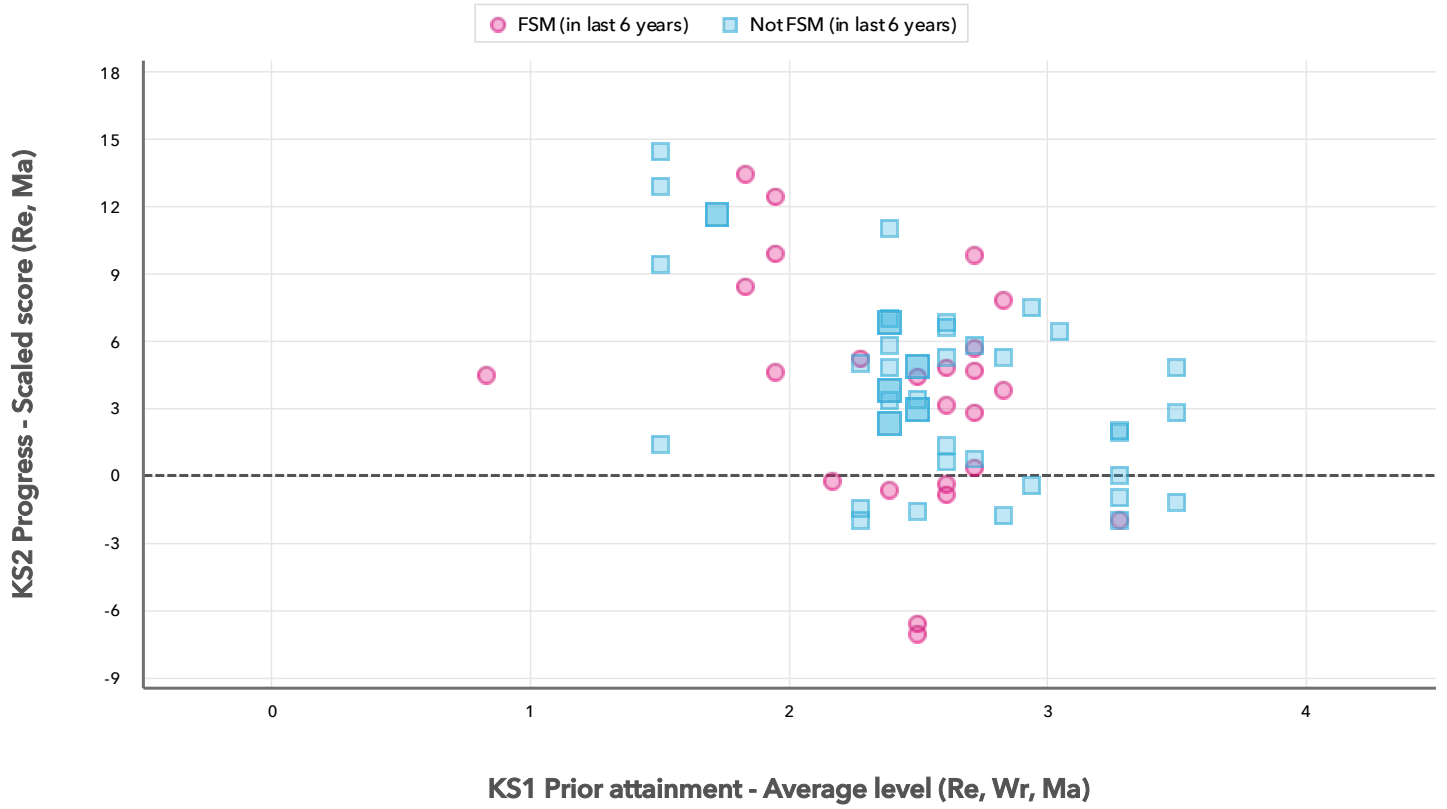


## Attainment & progress

Pupils	Attainment			Progress					
	Average Scaled Score (Re, Ma)			Average Scaled Score (Re, Ma)					
	FSM6	Not FSM6	Gap	FSM6	Not FSM6	Gap			
<b>Summary</b>	All Pupils	24	50	105.4 <span style="color: green;">+</span>	106.9	-1.5	3.7 <span style="color: green;">+</span>	4.1 <span style="color: green;">+</span> <span style="color: red;">↓</span>	-0.4
<b>Gender</b>	Male	14	23	105.3	107.8	-2.5	3.6	4	-0.4
	Female	10	27	105.7	106.2	-0.5	3.7	4.2	-0.5
<b>DFE Prior Attainment</b>	Higher attainers	1	11	108.5	112.1	-3.6	-2	1.9	-3.9
	Middle attainers	21	29	106.4	106.4	0	3.8	3.7	0.1
	Lower attainers	2	6	94.3	102.3	-8	4.5	10.2	-5.7
<b>SEN Group</b>	SEN Support	4	6	98.6	101.8	-3.2	3.7	5.9	-2.2
	No SEN	20	44	106.8	107.6	-0.8	3.6	3.9	-0.3
<b>Ethnic Group</b>	White	6	13	102.9	109.3	-6.4	2.7	4.8	-2.1
	Not White	18	37	106.3	106.1	0.2	4	3.9	0.1

# Scatterplot

KS2 Pupil scatterplot 2018 74 pupils highlighted by Pupil Premium



## Context

## Context · Year 6 · 2017 / 2018

		Pupils	Proportion	
			School	National
<b>Summary</b>	All Pupils	75	100%	100%
<b>Gender</b>	Male	38	51%	51%
	Female	37	49%	49%
<b>DFE Prior Attainment</b>	Higher attainers	12	16%	31%
	Middle attainers	50	67%	55%
	Lower attainers	8	11%	9%
<b>Pupil Premium</b>	FSM (in last 6 years)	24	32%	30%
	Not FSM (in last 6 years)	51	68%	69%
<b>FSM</b>	FSM	10	13%	15%
	Not FSM	65	87%	85%
<b>FSM Ever</b>	FSM (ever)	24	32%	31%
	Not FSM (ever)	51	68%	69%
<b>Term of Birth</b>	Autumn Term	22	29%	33%
	Spring Term	23	31%	32%
	Summer Term	30	40%	35%
<b>SEN Group</b>	SEN Support	10	13%	15%
	No SEN	65	87%	82%
<b>EAL</b>	First language not English	48	64%	20%
	First language English	27	36%	80%
<b>Mobility</b>	Joined in Y5 or Y6	6	8%	7%
	Joined before Y5	69	92%	93%
<b>Ethnicity</b>	White	20	27%	74%
	Black Caribbean	1	1%	3%
	Black African	6	8%	6%
	Indian	13	17%	3%
	Pakistani	4	5%	4%
	Bangladeshi	24	32%	2%
	Other Asian	1	1%	3%
	Chinese	1	1%	0%
	Any Other	5	7%	4%

## Absence · Year 6 · Autumn 2014 - Summer 2017

		Pupils	Absence		Persistent absentees	
			School	National	School	National
<b>Summary</b>	All Pupils	75	4%	4%	4%	6%
<b>Gender</b>	Male	38	3%	4%	3%	6%
	Female	37	4%	4%	5%	5%
<b>DFE Prior Attainment</b>	Higher attainers	12	2%	3%	0%	2%
	Middle attainers	50	4%	4%	6%	6%
	Lower attainers	8	3%	6%	0%	14%
<b>Pupil Premium</b>	FSM (in last 6 years)	24	4%	5%	8%	12%
	Not FSM (in last 6 years)	51	3%	3%	2%	3%
<b>FSM</b>	FSM	10	4%	6%	10%	16%
	Not FSM	65	4%	4%	3%	4%
<b>FSM Ever</b>	FSM (ever)	24	4%	5%	8%	11%
	Not FSM (ever)	51	3%	3%	2%	3%
<b>Term of Birth</b>	Autumn Term	22	4%	4%	5%	6%
	Spring Term	23	4%	4%	9%	6%
	Summer Term	30	3%	4%	0%	5%
<b>SEN Group</b>	SEN Support	10	3%	5%	0%	10%
	No SEN	65	4%	4%	5%	4%
<b>EAL</b>	First language not English	48	4%	4%	6%	5%
	First language English	27	3%	4%	0%	6%
<b>Mobility</b>	Joined in Y5 or Y6	6	7%	6%	17%	15%
	Joined before Y5	69	3%	4%	3%	5%
<b>Ethnicity</b>	White	20	4%	4%	0%	6%
	Black Caribbean	1	1%	5%	0%	9%
	Black African	6	4%	3%	17%	3%
	Indian	13	2%	3%	0%	3%
	Pakistani	4	8%	5%	25%	6%
	Bangladeshi	24	4%	5%	4%	5%
	Other Asian	1	7%	4%	0%	4%
	Chinese	1	2%	2%	0%	1%
	Any Other	5	2%	4%	0%	6%