

# 2019 KS2 School Dashboard for governors & school leaders

Produce custom dashboards  
at [fftaspire.org](http://fftaspire.org)

## Park Primary School

LA Newham DFE 3162051 Produced January 2020 Version 2

### What it is

Seven easy-to-use reports that help governors and school leaders to evaluate school performance using the latest 2019 DFE school performance indicators.

### What it tells you

- What are the strengths and areas for improvement in your school?
- How does attainment and pupil progress compare to the national average over the last three years?
- How are you performing in different subjects?
- Do you have any under-performing groups of pupils?
- How might the context of your school affect performance?
- How does pupil attendance compare to the national average?

### About the data shown

1 2 3

#### Actual results

Actual results for your school, using a range of measures such as averages and thresholds.



#### Gauges

These display headline indicators and whether actual results and pupils' progress are in line with, or significantly above or below, the national average.

ESTIMATED



1 2 3

#### Pupil progress

The value added progress that your pupils have made from one key stage to the next. FFT compares your actual results to the estimated results based on the progress of similar pupils nationally.



#### Statistical significance

Green plus signs and red minus signs highlight where either actual results or pupils' progress is significantly above or below the national average.



#### Trends

The dashboard analyses school performance over 3-5 years. Any significant year-on-year improvement is highlighted using an up arrow. Significant declines in performance are highlighted with a down arrow.



#### Strengths & weaknesses

These highlight key pupil groups and subjects where progress is above or below the national average.

### Working in partnership with



### Data sources

Generated from FFT Aspire which includes data sourced from the DfE (National Pupil Database) and data calculated by FFT. FFT is accredited as a DfE supplier to receive early access to ASP data. Headline performance indicators will be consistent with the DfE School Performance Tables and ASP.

# Overview

## KS2 Attainment 2019 · Actual results

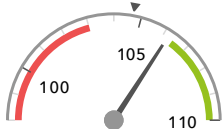
72 pupils

Average Scaled Score (Re, Ma)

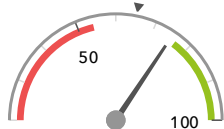
% Expected standard+ (Re, Wr, Ma)

106.2

75%



In line with the national average (104.7) ◀



In line with the national average (65%) ◀

## KS2 Progress 2019 · Value Added

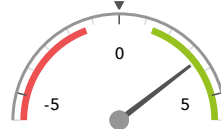
59 matched pupils

Average Scaled Score (Re, Ma)

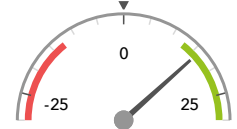
% Expected standard+ (Re, Wr, Ma)

+3.5+

+16%+



Significantly above the national average (0) ◀



Significantly above the national average (0%) ◀

## KS2 higher and lower performing pupil groups 2019

Minimum group size: 5

	Higher performing	Lower performing
<b>Overall achievement</b> pupil progress	Lower attainers (6) + White (13) + Not FSM (ever) (40) +	FSM (10)
<b>KS2 reading achievement</b> pupil progress	Lower attainers (6) White (13) + Autumn Term (24) + ↑	FSM (10)
<b>KS2 writing achievement</b> pupil progress	Lower attainers (6) White (13) + Female (23) +	Joined in Y5 or Y6 (7) Pakistani (8)
<b>KS2 mathematics achievement</b> pupil progress	White (13) + Indian (13) + Lower attainers (6)	Any Other (7) ↓
<b>KS2 grammar, punctuation &amp; spelling achievement</b> pupil progress	Female (23) + Bangladeshi (9) + Not FSM (ever) (40) +	FSM (10) FSM (ever) (18) ↓ FSM (in last 6 years) (18) ↓

KS2's latest academic year uses the Spring 2019 DfE census. Earlier years use that year's Spring census – [learn more](#) · [See recent Aspire updates](#)

# Attainment & progress

## KS2 Attainment 2019

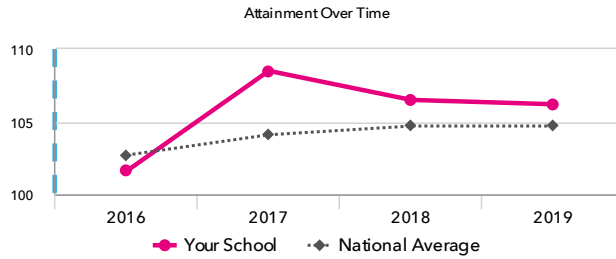
72 pupils

Average Scaled Score (Re, Ma)

**106.2**



In line with the national average (104.7)

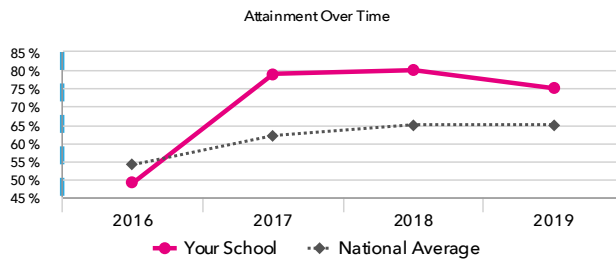


% Expected standard+ (Re, Wr, Ma)

**75%**



In line with the national average (65%)



## KS2 Progress 2019

59 matched pupils

Average Scaled Score (Re, Ma)

**+3.5+**



Significantly above the national average (0)

% Expected standard+ (Re, Wr, Ma)

**+16%+**



Significantly above the national average (0%)

## KS2 performance summary

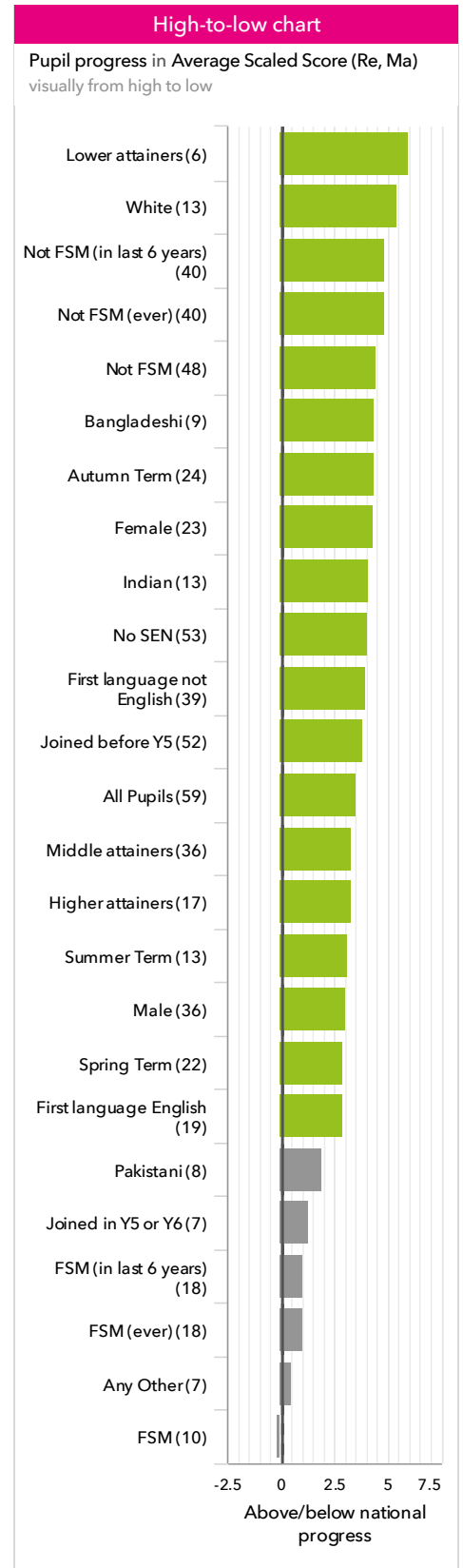
	Actual results			Pupil progress		
	2017	2018	2019	2017	2018	2019
Number of Pupils / % Matched	72	74	72	88%	95%	82%
% Expected standard+ (Re, Wr, Ma)	79% <span>+</span> <span>↑</span>	80% <span>+</span>	75%	+31% <span>+</span> <span>↑</span>	+25% <span>+</span>	+16% <span>+</span>
% Higher standard (Re, Wr, Ma)	18% <span>+</span> <span>↑</span>	11%	18% <span>+</span>	+15% <span>+</span>	+5%	+13% <span>+</span>
Average Scaled Score (Re, GPS, Ma)	109.4 <span>+</span> <span>↑</span>	107.4 <span>+</span> <span>↓</span>	106.7	+6.7 <span>+</span> <span>↑</span>	+4.7 <span>+</span> <span>↓</span>	+3.6 <span>+</span>
Average Scaled Score (Re, Ma)	108.5 <span>+</span> <span>↑</span>	106.5 <span>+</span> <span>↓</span>	106.2	+6.3 <span>+</span> <span>↑</span>	+4.0 <span>+</span> <span>↓</span>	+3.5 <span>+</span>
% Expected standard+ Reading	89% <span>+</span> <span>↑</span>	84%	81%	+25% <span>+</span> <span>↑</span>	+16% <span>+</span>	+15% <span>+</span>
% Higher standard Reading	44% <span>+</span> <span>↑</span>	22% <span>↓</span>	38% <span>↑</span>	+28% <span>+</span> <span>↑</span>	+1% <span>↓</span>	+17% <span>+</span>
Scaled Score Reading	108.2 <span>+</span> <span>↑</span>	105.6 <span>↓</span>	105.4	+6.4 <span>+</span> <span>↑</span>	+2.9 <span>+</span> <span>↓</span>	+3.4 <span>+</span>
% Expected standard+ Writing	86%	88%	82%	+18% <span>+</span>	+15% <span>+</span>	+11%
% Higher standard Writing	25%	23%	28%	+15% <span>+</span>	+11% <span>+</span>	+16% <span>+</span>
Scaled Score Writing	103.5 <span>+</span>	103.7	103.2	+4.3 <span>+</span>	+3.5 <span>+</span>	+3.1 <span>+</span>
% Expected standard+ Maths	89% <span>+</span> <span>↑</span>	91% <span>+</span>	83%	+19% <span>+</span> <span>↑</span>	+20% <span>+</span>	+9%
% Higher standard Maths	47% <span>+</span> <span>↑</span>	38% <span>+</span>	40% <span>+</span>	+33% <span>+</span> <span>↑</span>	+22% <span>+</span>	+17% <span>+</span>
Scaled Score Maths	108.9 <span>+</span> <span>↑</span>	107.3 <span>+</span>	106.9 <span>+</span>	+6.3 <span>+</span> <span>↑</span>	+5.0 <span>+</span>	+3.7 <span>+</span>
% Expected standard+ Grammar, Punctuation & Spelling	93% <span>+</span> <span>↑</span>	93% <span>+</span>	82% <span>↓</span>	+20% <span>+</span>	+21% <span>+</span>	+11% <span>+</span>
% Higher standard Grammar, Punctuation & Spelling	63% <span>+</span> <span>↑</span>	55% <span>+</span>	49% <span>+</span>	+44% <span>+</span> <span>↑</span>	+33% <span>+</span>	+23% <span>+</span>
Scaled Score Grammar, Punctuation & Spelling	111.6 <span>+</span> <span>↑</span>	109.3 <span>+</span> <span>↓</span>	107.4	+7.8 <span>+</span> <span>↑</span>	+5.8 <span>+</span> <span>↓</span>	+3.5 <span>+</span> <span>↓</span>
% Expected standard+ Science	88%	78%	81%	-	-	-

KS2's latest academic year uses the Spring 2019 DfE census. Earlier years use that year's Spring census – [learn more](#) · [See recent Aspire updates](#)

# Pupil groups

## KS2 Pupil groups performance 2019

			Actual results			Pupil progress		
	Pupils		Average Scaled Score (Re, Ma)	% Expected standard+ (Re, Wr, Ma)	% Higher standard (Re, Wr, Ma)	Average Scaled Score (Re, Ma)	% Expected standard+ (Re, Wr, Ma)	% Higher standard (Re, Wr, Ma)
<b>Summary</b>	All Pupils	72	106.2	75%	18% +	+3.5 +	+16% +	+13% +
<b>Gender</b>	Male	41	106.1	71%	15%	+3.0 +	+15%	+8%
	Female	31	106.3	81%	23%	+4.3 +	+19%	+22% +
<b>DFE Prior Attainment</b>	Higher attainers	17	113.2 +	100%	47%	+3.3 +	+5%	+21%
	Middle attainers	36	106.0 +	78% +	11% +	+3.3 +	+22% +	+9% +
	Lower attainers	6	95.2	17%	17% +	+6.0 +	+12%	+17% +
<b>Pupil Premium</b>	FSM (in last 6 years)	20	103.7	60%	5%	+1.1	+0%	-1%
	Not FSM (in last 6 years)	51	107.1	80%	24% +	+4.8 +	+24% +	+21% +
<b>FSM</b>	FSM	12	103.8	58%	8%	-0.1	-10%	-1%
	Not FSM	59	106.6	78%	20%	+4.4 +	+22% +	+18% +
<b>FSM Ever</b>	FSM (ever)	20	103.7	60%	5%	+1.1	+0%	-1%
	Not FSM (ever)	51	107.1	80%	24% +	+4.8 +	+24% +	+21% +
<b>Term of Birth</b>	Autumn Term	29	106.1	69%	21%	+4.4 +	+19%	+15% +
	Spring Term	28	106.1	79%	21%	+2.9 +	+16%	+18% +
	Summer Term	15	106.6	80%	7%	+3.1 +	+11%	+1%
<b>SEN Group</b>	SEN Support	3	93.8	33%	0%	-1.9	+0%	-3%
	EHC Plan	2	87.5	0%	0%	-2.2	-4%	-0%
	No SEN	66	107.0	79%	20%	+4.1 +	+18% +	+16% +
<b>EAL</b>	First language not English	51	105.6	73%	20%	+4.0 +	+17% +	+17% +
	First language English	20	107.5	80%	15%	+2.9 +	+15%	+8%
<b>Mobility</b>	Joined in Y5 or Y6	12	107.1 ↑	83% +	8%	+1.3	+6%	+2%
	Joined before Y5	60	106.0	73%	20% +	+3.8 +	+18% +	+15% +
<b>Ethnicity</b>	White	15	107.7	87%	13%	+5.5 +	+31% +	+12% +
	Black Caribbean	4	109.8	100%	25%	+3.9	+28%	+11%
	Black African	2	89.5	0%	0%	-2.2	-7%	-0%
	Indian	14	109.0	86%	36%	+4.1 +	+16%	+27% +
	Pakistani	8	105.9	63%	13%	+1.9	-1%	-2%
	Bangladeshi	11	106.2	73%	18%	+4.4 +	+17%	+17%
	Other Asian	4	107.1	100%	25%	+4.1	+32%	+29%
	Any Other	13	102.1	54%	8%	+0.5	-0%	+9%
	No Ethnicity Data	1	109.5	100%	0%	-2.7	+2%	-43%



KS2's latest academic year uses the Spring 2019 DfE census. Earlier years use that year's Spring census – [learn more](#) · [See recent Aspire updates](#)

# Subjects

## KS2 subject performance 2019

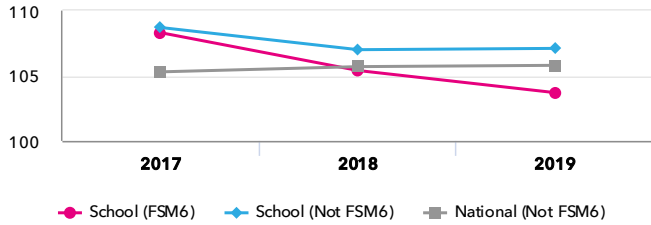
	Actual results			Pupil progress			Actual results over time		
	2017	2018	2019	2017	2018	2019			
Number of Pupils / % Matched	72	74	72	88%	95%	82%			
<b>Reading</b>									
% Expected standard+	89% <span>+</span> <span>↑</span>	84%	81%	+25% <span>+</span> <span>↑</span>	+16% <span>+</span>	+15% <span>+</span>	% Expected standard+ Reading		
% Higher standard	44% <span>+</span> <span>↑</span>	22% <span>↓</span>	38% <span>↑</span>	+28% <span>+</span> <span>↑</span>	+1% <span>↓</span>	+17% <span>+</span>			
Scaled Score	108 <span>+</span> <span>↑</span>	106 <span>↓</span>	105	+6.4 <span>+</span> <span>↑</span>	+2.9 <span>+</span> <span>↓</span>	+3.4 <span>+</span>			
<b>Writing</b>									
% Expected standard+	86%	88%	82%	+18% <span>+</span>	+15% <span>+</span>	+11%	% Expected standard+ Writing		
% Higher standard	25%	23%	28%	+15% <span>+</span>	+11% <span>+</span>	+16% <span>+</span>			
Scaled Score	104 <span>+</span>	104	103	+4.3 <span>+</span>	+3.5 <span>+</span>	+3.1 <span>+</span>			
<b>Maths</b>									
% Expected standard+	89% <span>+</span> <span>↑</span>	91% <span>+</span>	83%	+19% <span>+</span> <span>↑</span>	+20% <span>+</span>	+9%	% Expected standard+ Maths		
% Higher standard	47% <span>+</span> <span>↑</span>	38% <span>+</span>	40% <span>+</span>	+33% <span>+</span> <span>↑</span>	+22% <span>+</span>	+17% <span>+</span>			
Scaled Score	109 <span>+</span> <span>↑</span>	107 <span>+</span>	107 <span>+</span>	+6.3 <span>+</span> <span>↑</span>	+5.0 <span>+</span>	+3.7 <span>+</span>			
<b>Grammar, Punctuation &amp; Spelling</b>									
% Expected standard+	93% <span>+</span> <span>↑</span>	93% <span>+</span>	82% <span>↓</span>	+20% <span>+</span>	+21% <span>+</span>	+11% <span>+</span>	% Expected standard+ Grammar, Punctuation & Spelling		
% Higher standard	63% <span>+</span> <span>↑</span>	55% <span>+</span>	49% <span>+</span>	+44% <span>+</span> <span>↑</span>	+33% <span>+</span>	+23% <span>+</span>			
Scaled Score	112 <span>+</span> <span>↑</span>	109 <span>+</span> <span>↓</span>	107	+7.8 <span>+</span> <span>↑</span>	+5.8 <span>+</span> <span>↓</span>	+3.5 <span>+</span> <span>↓</span>			
<b>Science</b>									
% Expected standard+	88%	78%	81%	-	-	-	% Expected standard+ Science		

KS2's latest academic year uses the Spring 2019 DfE census. Earlier years use that year's Spring census – [learn more](#) · [See recent Aspire updates](#)

# Disadvantaged pupils

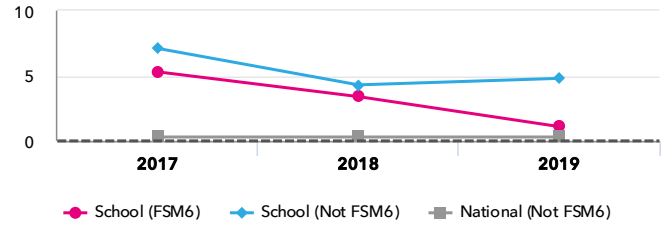
## KS2 attainment for disadvantaged pupils 2019

Average Scaled Score (Re, Ma)

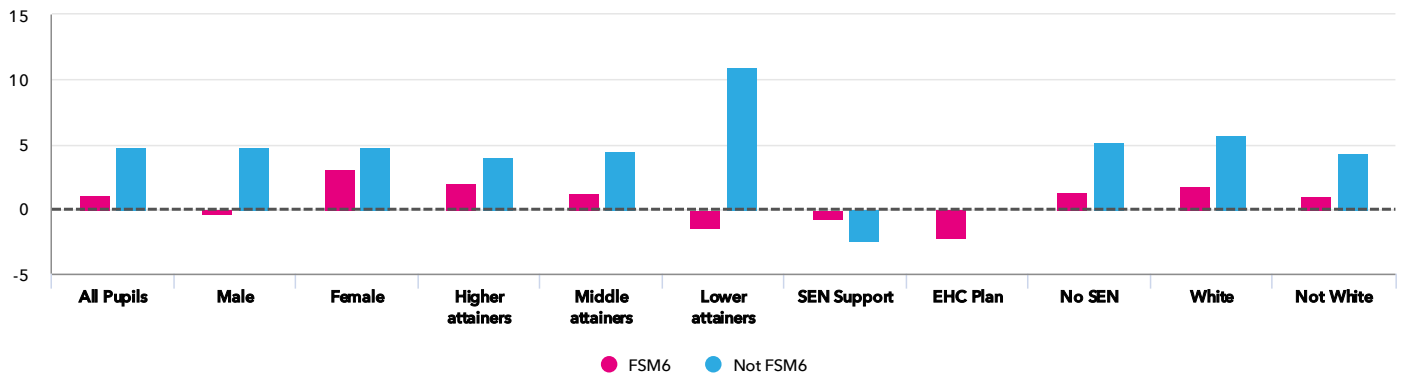


## KS2 progress for disadvantaged pupils 2019

Average Scaled Score (Re, Ma)



## Progress gap Average Scaled Score (Re, Ma)



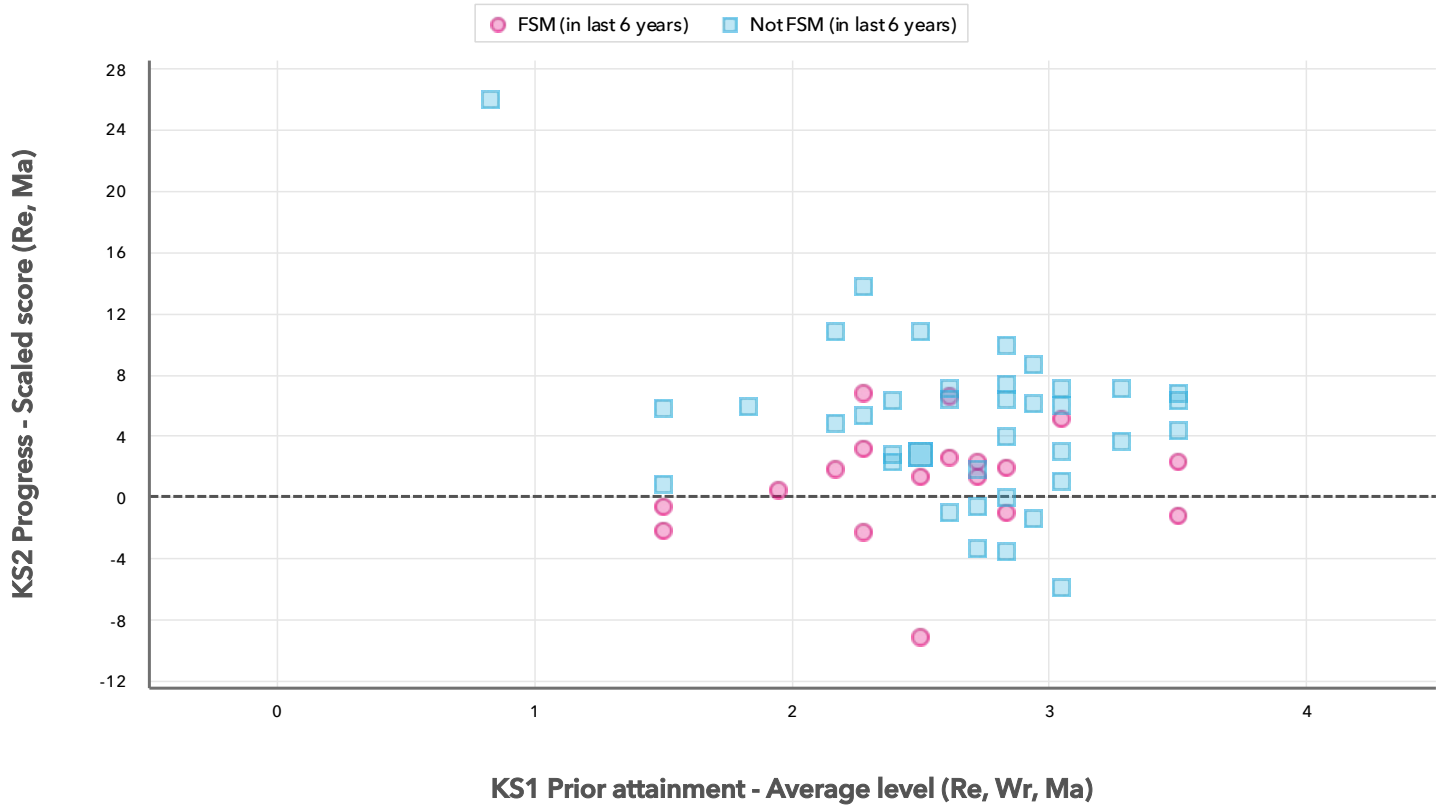
## Attainment & progress

Pupils	Attainment			Progress					
	Average Scaled Score (Re, Ma)			Average Scaled Score (Re, Ma)					
	FSM6	Not FSM6	Gap	FSM6	Not FSM6	Gap			
<b>Summary</b>	All Pupils	20	51	103.7	107.1	-3.4	1.1	4.8 <span style="color: green;">+</span>	-3.7
<b>Gender</b>	Male	12	28	101.3	108.1	-6.8	-0.3	4.8	-5.1
	Female	8	23	107.4	106	1.4	3.1	4.8	-1.7
<b>DFE Prior Attainment</b>	Higher attainers	3	13	112.8	113.6	-0.8	2.1	4	-1.9
	Middle attainers	13	23	103.5	107.4	-3.9	1.2	4.5	-3.3
	Lower attainers	2	4	88.3	99.8	-11.5	-1.4	10.9	-12.3
<b>SEN Group</b>	SEN Support	1	2	89	96.3	-7.3	-0.7	-2.5	1.8
	EHC Plan	1	1	87.5	-	-	-2.2	-	-
	No SEN	18	48	105.4	107.6	-2.2	1.4	5.2	-3.8
<b>Ethnic Group</b>	White	1	14	100	108.3	-8.3	1.8	5.8	-4
	Not White	19	37	103.9	106.7	-2.8	1	4.4	-3.4

KS2's latest academic year uses the Spring 2019 DfE census. Earlier years use that year's Spring census – [learn more](#) · [See recent Aspire updates](#)

# Scatterplot

KS2 Pupil scatterplot 2019 72 pupils highlighted by Pupil Premium



KS2's latest academic year uses the Spring 2019 DfE census. Earlier years use that year's Spring census – [learn more](#) · [See recent Aspire updates](#)

## Context

## Context · Year 6

		Pupils		Comparative profile 2018 / 2019		Absence during Key Stage 2		Persistent absence during Key Stage 2	
		School	School	National	School	National	School	National	
<b>Summary</b>	All Pupils	73	100%	100%	-	-	-	-	
<b>Gender</b>	Male	40	55%	51%	-	-	-	-	
	Female	33	45%	49%	-	-	-	-	
<b>DFE Prior Attainment</b>	Higher attainers	16	22%	32%	-	-	-	-	
	Middle attainers	36	49%	54%	-	-	-	-	
	Lower attainers	6	8%	8%	-	-	-	-	
<b>Pupil Premium</b>	FSM (in last 6 years)	22	30%	29%	-	-	-	-	
	Not FSM (in last 6 years)	51	70%	71%	-	-	-	-	
<b>FSM</b>	FSM	14	19%	17%	-	-	-	-	
	Not FSM	59	81%	83%	-	-	-	-	
<b>FSM Ever</b>	FSM (ever)	22	30%	31%	-	-	-	-	
	Not FSM (ever)	51	70%	69%	-	-	-	-	
<b>Term of Birth</b>	Autumn Term	29	40%	33%	-	-	-	-	
	Spring Term	28	38%	33%	-	-	-	-	
	Summer Term	16	22%	34%	-	-	-	-	
<b>SEN Group</b>	SEN Support	3	4%	15%	-	-	-	-	
	EHC Plan	2	3%	3%	-	-	-	-	
	No SEN	68	93%	82%	-	-	-	-	
<b>EAL</b>	First language not English	53	73%	21%	-	-	-	-	
	First language English	20	27%	79%	-	-	-	-	
<b>Mobility</b>	Joined in Y5 or Y6	13	18%	7%	-	-	-	-	
	Joined before Y5	60	82%	93%	-	-	-	-	
<b>Ethnicity</b>	White	16	22%	74%	-	-	-	-	
	Black Caribbean	4	5%	3%	-	-	-	-	
	Black African	2	3%	6%	-	-	-	-	
	Indian	14	19%	3%	-	-	-	-	
	Pakistani	8	11%	5%	-	-	-	-	
	Bangladeshi	11	15%	2%	-	-	-	-	
	Other Asian	5	7%	3%	-	-	-	-	
	Any Other	13	18%	4%	-	-	-	-	

KS2's latest academic year uses the Spring 2019 DfE census. Earlier years use that year's Spring census – [learn more](#) · [See recent Aspire updates](#)