

# PARK NEWSLETTER



*Ensuring every individual achieves their best through high expectations for all;  
with a focus on confidence, creativity, care and aspiration.*

19th May 2023

## Need to Know

### Mrs Ttoffali's Weekly Update



Dear all,

Happy Friday! I trust everybody has had an enjoyable week and has a little something nice lined up for the weekend. It was lovely to see you all at the beginning of the week and then I had a few appointments in the latter part. I have now had my second round of chemo and I am feeling well so far. God willing, I will be in from Tuesday next week but I come with a warning: I will be cutting my hair very short at the weekend as I am losing it quite rapidly. I will go to the classes to explain things to the children as I think it is important that they are helped to understand why I look different. It is also important that they learn to respect the fact that some people do look different and that should not be a reason to stare or point etc. If you wish to talk to me about this please do as it may be that your family has triggers (family loss or members of your family who are currently going through treatment) that I should be mindful of when addressing the children.

#### This week's 'shout outs':

- Very well done to Attenborough and Edison Classes who had their Sharing Assemblies today. Well done to you and thank you to all the parents and carers who came to support. If you can make it (and we do appreciate that it is not always possible) it is great as the children love to perform to the 'grown ups'.
- A huge well done and thank you is sent from me to all of the Year 2 children who have approached their 'special week' with focus, determination and perseverance. Thank you for being so amazing Year 2; we are all really proud of your hard work.

#### Health and Safety:

Please may I request that you ask your children to dismount their bikes at the gate and walk with their bicycle/ scooter onto the school grounds in order to park their vehicle?

When the children collect their scooter/ bike at the end of the day, we have not previously said that they cannot ride them on the premises but we are currently considering this possibility. For now, we are asking that you speak to your children (as we will do) about cycling/ scooting with care when there are lots of pedestrians on site (we have had a couple of close accidents). If we find that respectful cycling and scooting is not happening, we will need to implement a purely pedestrian policy on the school site. I really do not want to have to do this but we will if we assess that the risk is too high to pursue our current policy. Please support us in this because there are often toddlers and buggies etc on site. It is a small area and we need to ensure that when the playground is busiest (between 3:15 and 3:25) safety is ensured. Thank you in advance for your support.

#### Exciting work opportunity:



Please see the linked adverts to 2 work opportunities we have available at Park. Both are to support our wraparound care team. One role is to start asap and is for

a Breakfast Club Worker

[Wraparound Care Breakfast Club Worker](#). The other is to support the team in the afternoon from 3:30-6:00. [Wraparound Care After School Club Worker](#). If you are potentially interested in either post and would like to talk to anyone about either role, please email

[info@park.newham.sch.uk](mailto:info@park.newham.sch.uk) and write FAO Ms Broadhurst who will happily provide more information. As you will note, the application forms are linked to the adverts

That's it from me. I wish you all a lovely, happy and safe weekend. Dare I say it, but it seems that the sun may even have its hat on!

Warmest regards, Natasha Ttofalli

---

☆☆☆☆ **Stars of the Week** ☆☆☆☆

### Reception and Key Stage 1

Riya, Sam and Zainab in Reception

Reia, Alice and Suraia in Year 1

Kiyan, Meryem and Yasinin Year 2

### Lower Key Stage 2

Ishaaq, Muhammad and Devon in Year 3

Rona, Umar and Samiah in Year 4

### Upper Key Stage 2

Denisa, Syeda and Aryan in Year 5

Omar, Raidah and Arafin in Year 6

### Attendance Stars

**Seacole Class** in EYFS and Key Stage 1 with 96%

**Hawking Class** in Lower Key Stage 2 with 98%

**Helen Keller Class** in Upper Key Stage 2 with 99%

**Whole School Attendance** is 95%

---

### Wrap Around Care

Our Wrap Around Care Provision is open to all families to book via Scopay.

If you have any questions then please email us at

[info@park.newham.sch.uk](mailto:info@park.newham.sch.uk) or if you have a message for the Wrap Around Care team directly then please email [wrap.around@park.newham.sch.uk](mailto:wrap.around@park.newham.sch.uk)



### Message from Ms Isabella

Dear parents and carers,

This is a polite reminder that in the morning teachers and support staff are not allowed to let your children in the building and take them to breakfast club; a wraparound staff member needs to do so.

Thank you for your patience.

Isabella

---

### Dates for the Diary

#### 2022-2023 Term Dates

**Wednesday 24th May** - Class Photos (professional photographers in school)

**Friday 26th May** - KS1 Author Event

**Friday 26th May** - Year 3 at Natural History Museum

**Monday 29th May - Friday 2nd June** - Half Term Break

**Monday 5th June** - Sports Day

**Friday 9th June** - Year 4 Sleepover

**Monday 12th June** - Online Safety Workshops for pupils and parents/carers (9am)

**Tuesday 20th June** - KS1 Chalkwell Beach Visit

**Wednesday 21st June** - KS2 Geography Bee

**Friday 23rd June** - Poetry in the Park

**Friday 23rd June** - PSA Summer Fete

**Tuesday 4th July** - Year 6 Production (Shrek)

**Thursday 6th July** - Seacole Class at Mudchute Farm

**Friday 7th July** - MacArthur and Jemison Classes at Mudchute Farm





## Park's Food Bank

Thank you to families who have already contributed to our food bank. We would like to request any families who are able to support our foodbank to please leave donations in the box in the front office. Due to storage we can only accept long lasting items such as dry food, tins and pasta. We also accept toiletries and cleaning products.

If you would like to access our food bank, please come to the school entrance on a Friday between 2.30 to 3.30pm. Please bring your own bag.

## Sharing Assemblies

Please see the dates and classes for Sharing assemblies for this term. If you can make it, please do join us (KS1, you will need to drop off your child and then enter through the main office so we have a record of who is coming in.).

Date	KS1 - 9.05am	KS2 - 2.30pm
Friday 26th May		Hawking
Mid-Term Break		
Friday 9th June	Einstein	Mandela
Friday 16th June	MacArthur	Helen Keller
Friday 30th June	Jemison	Berners Lee

## Curriculum Area

### Miss Laine's Cooking/Exploring Club

This week the children made a 'rice cake surprise'. They used: fruit, vegetables and squirty cream on a rice cake.... They had lots of fun!



---

## Year 5 at Science Museum

Year 5 went to the Science Museum this week and learned a lot about space and clocks.



---

## Year 1 and 2 Reading Competition

Please click on the picture below to access information about the Year 1 and 2 Reading Competition.

### Year 1 & 2 Reading Competition!



---

## Online Safety







We would like to bring your attention to the fact that we are planning on hosting Online Safety Workshops for parents on Monday 12th June at 9am.

---

## House Points

At Park we use a House Points system in which every child belongs to one of the four houses: Birch, Maple, Oak and Sycamore. House Points are awarded for children who demonstrate the school values. 5 HPs are awarded where significant examples of confidence, creativity, care and aspiration are exemplified. Below is the total of the House Points collected this week. Well done to **Birch**! You have the highest total this week!

<b>Birch</b> 495 	<b>Sycamore</b> 435 
<b>Maple</b> 410 	<b>Oak</b> 375 

---

## Parent Volunteers

If you are interested in volunteering at Park, then please complete this [Google Form](#).

---

## ESOL Classes

We would like to offer ESOL classes for parents/carers at Park, however we have not had enough families interested to start running them. If you would like to attend ESOL classes, please contact the school office.

---

## This week...

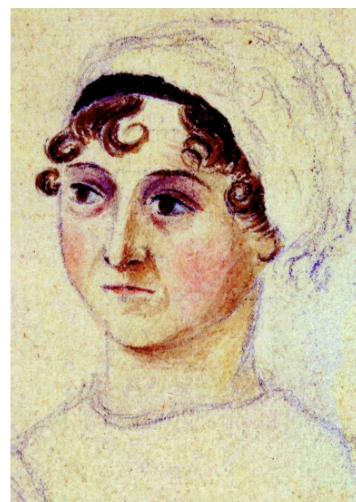
Thought for the Week

**There is no  
enjoyment  
like  
reading!**

Jane Austen  
Pride and Prejudice

Thought for the week  
Inspiring gardens for learning  
canpress.co.uk

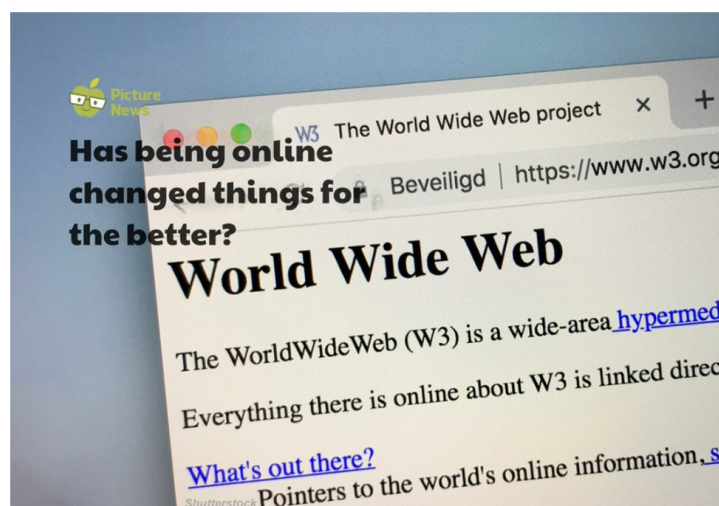
Portrait of Jane Austen by her sister Cassandra



## Music Theme of the Week



## Current Affairs



[Primary Picture News Resource England - 22nd May- World Wide Web](#)

## Additional Information

### PSA Volunteers Wanted



Calling all parents and carers and staff at Park Primary! The PSA need your help.... We are currently a small group of volunteer parents/ carers and staff from the

school who help to organise and run the bake sales and summer/ winter events to raise funds for the school. The money has helped subsidise trips, buy books, support the food bank and many more resources and activities for the children at Park.

BUT we now need more help to be able to continue to support the school in the children's experience of primary school life and the opportunities they can have at this amazing school.

If you can offer a bit of time at a bake sale, a contribution of ideas, help in organising larger events, please send your name, contact no to [psa@park.newham.sch.uk](mailto:psa@park.newham.sch.uk). and we will add you to the what's app group where we plan these events in what little time we all have! We can't do this without the Park community support and we will be stronger together!

Oh, and we have a summer fayre to plan for... Please join us!

## Park Primary School Toddler Play Sessions



### Toddler and Parent Play Sessions

- Enjoy, learn and play in our indoor and outdoor environments.
- Meet other parents with young children.
- Join in with rhymes and songs.



Indoor toddler sessions for 1-3 years  
Wednesdays for 15 weeks  
Starting from 26th April  
11:15 - 12:30

Outdoor toddler sessions for 2-3 years  
Fridays for 15 weeks  
Starting from 28th April  
1:30 - 3:00 (come dressed for the weather)

Please come to the main school gate on Matthews Park Avenue and a member of staff will direct you to the session.

Note: No sessions on the 31st May or 2nd of June due to the half term holiday.

## Our Parks



## Newham Educational Psychology Service

### Newham Educational Psychology Service



### Parent Advice Phone-In with an Educational Psychologist (EP)

The EPS Parent Advice sessions are offered to any Newham parent or carer who would like to discuss concerns about their child with an educational psychologist (examples may include: your child's emotional well-being, challenging behaviours, learning progress, your relationship with your child or some of your own worries). The sessions aim to be supportive, confidential, and informal. Each session is 40 minutes.

Please note these are stand-alone, one-off sessions that do not result in follow-up work. They are free sessions and open to all parents and carers of Newham children and young people. There is no criteria or threshold to access these sessions.

**Sessions are monthly on:**

16 May

13 June

11 July 2023

To book a session between 10 and 12 noon contact

Terrie on: [07855 975308](tel:07855975308) or email: [eps@newham.gov.uk](mailto:eps@newham.gov.uk)

Book early to avoid disappointment

## Bag2School Collection

### BAG 2 SCHOOL

### FREE FUNDRAISING FOR SCHOOLS

In partnership with your school or organisation



Park Primary School



Bag 2 School is a company that specialises in the reuse and recycling of good quality second-hand clothing and we have arranged to make a collection from your school. All the bags will be weighed and you will be paid for the total weight collected. Remember, the more you collect the greater the benefit to your school.



PLEASE USE YOUR OWN BAGS (THERE IS NO LIMIT).

When the clothes have been removed from the bag the plastic will be packed and sent for recycling.

*We are collecting good quality items for RE-USE:*

Men's, ladies' & children's clothing, paired shoes, handbags, belts & accessories.

(No uniforms, workwear, pillows, duvets or pieces of fabric please)

**The more we weigh the more we pay!**

Extra bags are welcome - there's no limit

**Please return your Bag2School on:**

Friday 16 June 2023 by 9:00am



01609 780 222



[www.bag2school.com](http://www.bag2school.com)



[helpdesk@bag2school.com](mailto:helpdesk@bag2school.com)