

# PARK NEWSLETTER



*Ensuring every individual achieves their best through high expectations for all;  
with a focus on confidence, creativity, care and aspiration.*

7th May 2023

## Need to Know

### Mrs Ttoffali's Weekly Update



Dear all,

Despite the fact that the week was a four day one, we managed to pack in the action. I was delighted to host both assemblies on Friday as it was the first time in a while for me that I had had the privilege.

We are approaching 'test season' and the children in Year 6 are about to sit their SATs exams. May I take this opportunity to remind you, as our community, of our approach to the tests themselves. At Park, we absolutely respect the tests for what they are, which is a marker of the children's attainment at a particular time. We aspire for the very best for all children and, as such, we work really hard to ensure that all children are meeting national standards. More than anything, we want our children to be prepared and ready for the next stage in their education and they will not be prepared if their academic standards are not as they ought to be. That said, we do not believe in putting the children under pressure in order for them to achieve. Therefore, whilst the children will be well aware that they are about to face the tests they should not be feeling the pressure to achieve. They really only can do their best and use each test as an opportunity to apply all that they know. They will not achieve their best if they are nervous and stressed.

### Consent

We have worked hard this year to try to embed a culture of consent and this will continue as a priority next year. We are really trying to ensure that the children are confident to say 'no' whenever anybody is doing or saying something which makes them feel uncomfortable. Unfortunately this week we had an incident with children daring each other to do things which they knew they should not do. Please talk to your child(ren) about making their own personal

choices and if somebody is asking them to do something which they know is wrong please encourage their confidence to say no.



Perhaps a discussion about this picture and its quote would be a good starting point. Our aim is that all Park's children know they are enough, exactly as they are, and that they do not need to do things to gain someone's friendship for example.

### PSA

Thank you to our amazing Parent Staff Association (PSA) for another amazing successful Royal Cake Bake on Friday. As you know, all proceeds from such events go directly back into supporting your children's enriched education. We are very grateful for the amazing hard work. Thank you. On the subject of the PSA, please save the date: on Friday 23rd June, after school (more detail to follow) we will be hosting our Summer Fete (previously always held on a Saturday). This will be a great opportunity for the community to come together to mark the near end of this academic year.

To close my bit this week, may I reiterate my deep gratitude for your prayers, love and support. Every day that I am able to be in school, I am overwhelmed by your kind words and thoughts. Please be assured that I am looking after myself whilst 'doing the day job' and I am very ably supported by all staff including the Leadership Team. I wish you all a fabulous, long weekend.

Kind regards, Natasha Ttoffali

[We are Newham Update](#)

---

### ☆☆☆☆ Stars of the Week ☆☆☆☆

#### Reception and Key Stage 1

Santiago, Sheyla and Idris in Reception  
Quratulain, Jack and Izaiah in Year 1  
Janil, Sayma and Arsha in Year 2

#### Lower Key Stage 2

Ziqra, Abeeha and Radhika in Year 3  
Caden, Aamina and Raunak in Year 4

#### Upper Key Stage 2

Zahra, Kayla and Ravneet in Year 5  
Musa, Samia and Eliza in Year 6

#### Attendance Stars

**MacArthur Class** in EYFS and Key Stage 1 with 97%  
**Hawking Class** in Lower Key Stage 2 with 97%  
**Mandela Class** in Upper Key Stage 2 with 96%  
**Whole School Attendance** is 94%

---

### Wrap Around Care

Our Wrap Around Care Provision is open to all families to book via Scopay.

If you have any questions then please email us at

[info@park.newham.sch.uk](mailto:info@park.newham.sch.uk) or if you have a message for the Wrap Around Care team directly then please email [wrap.around@park.newham.sch.uk](mailto:wrap.around@park.newham.sch.uk)



### Message from Ms Isabella

Dear parents and carers,

This is a polite reminder that in the morning teachers and support staff are not allowed to let your children

in the building and take them to breakfast club; a wraparound staff member needs to do so.

Thank you for your patience.

Isabella

---

### Dates for the Diary

[2022-2023 Term Dates](#)

**Monday 8th May** - Bank Holiday  
(school closed)

**Monday 15th May** - Reception: sharing our reading  
**Monday 15th May** - Year 4 into 5 residential meeting at 2:30pm

**Tuesday 16th May** - Year 1 Drama Workshop

**Wednesday 17th May** - Year 5 at Science Museum

**Thursday 18th May** - Reception: sharing our reading

**Friday 19th May** - Reception: sharing our reading

**Wednesday 24th May** - Class Photos (professional photographers in school)

**Friday 26th May** - KS1 Author Event

**Friday 26th May** - Year 3 at Natural History Museum

**Monday 29th May - Friday 2nd June** - Half Term Break

**Monday 12th June** - Online Safety Workshops for pupils and parents/carers (9am)

**Friday 23rd June** - Poetry in the Park

**Friday 23rd June** - PSA Summer Fete

**Tuesday 4th July** - Year 6 Production (Shrek)



---

### Park's Food Bank

Thank you to families who have already contributed to our food bank. We would like to request any families who are able to support our foodbank to please leave donations in the box in the front office. Due to storage we can only accept long lasting items such as dry food,

tins and pasta. We also accept toiletries and cleaning products.

If you would like to access our food bank, please come to the school entrance on a Friday between 2.30 to 3.30pm. Please bring your own bag.

### Sharing Assemblies

Please see the dates and classes for Sharing assemblies for this term. If you can make it, please do join us (KS1, you will need to drop off your child and then enter through the main office so we have a record of who is coming in.).

Date	KS1 - 9.05am	KS2 - 2.30pm
Friday 12th May	Seacole	Galileo
Friday 19th May	Attenborough	Edison
Friday 26th May		Hawking
Mid-Term Break		
Friday 9th June	Einstein	Mandela
Friday 16th June	MacArthur	Helen Keller
Friday 30th June	Jemison	Berners Lee

### Welfare Team Updates - Headlice Check

We have had some cases of headlice in school so please check your child's hair and if you find any headlice, please ask for treatment from the pharmacy.

### Curriculum Area

#### Year 4 Performance - Seussical

As promised in last week's newsletter, here are some more photos from the performance.



### Year 4 at Science Museum

On Wednesday, as part of their work on Sound and Electricity, Year 4 visited the Science Museum.







### Getting Coronation Ready at Forest School

We have been busy at Forest School preparing for the coronation by making nature crowns and bunting. Amy collected fallen leaves and feathers to decorate her crown and Junayd made some hapa zome (leaf dye) bunting to decorate his classroom.

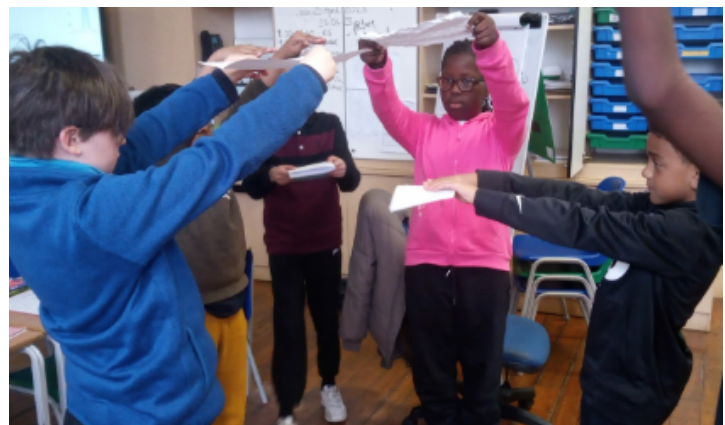
There are lots of fun activities for all the family in West Ham Park this weekend, including music and crafting. Have fun celebrating!



### Year 5 Science

Year 5 investigation: How does the relationship between surface area and air resistance affect the speed a moving object falls at?

Year 5 explored this through paper at first, thinking about how they would make their experiment a fair test, and the variables they could change. Then they built different sized parachutes in preparation for their next lesson, during which they would attach eggs to their different sized parachutes and drop them to measure the speed at which they fall.







### Parent Volunteers

If you are interested in volunteering at Park, then please complete this [Google Form](#).

### ESOL Classes

We would like to offer ESOL classes for parents/carers at Park, however we have not had enough families interested to start running them. If you would like to attend ESOL classes, please contact the school office.





### Online Safety



We would like to bring your attention to the fact that we are planning on hosting Online Safety Workshops for parents on Monday 12th June at 9am.

### House Points

At Park we use a House Points system in which every child belongs to one of the four houses: Birch, Maple, Oak and Sycamore. House Points are awarded for children who demonstrate the school values. 5 HPs are awarded where significant examples of confidence, creativity, care and aspiration are exemplified. Below is the total of the House Points collected this week. Well done to **Maple**! You have the highest total this week!

<b>Birch</b> 150 	<b>Sycamore</b> 120 
<b>Maple</b> 270 	<b>Oak</b> 115 

### This week...

#### Thought for the Week



## Music Theme of the Week



## Current Affairs



[Primary Picture News Resource England - 8th May- Eurovision](#)

## Additional Information

### PSA Volunteers Wanted



Calling all parents and carers and staff at Park Primary! The PSA need your help.... We are currently a small group of volunteer parents/ carers and staff from the school who help to organise and run the bake sales and summer/ winter events to raise funds for the school. The money has helped subsidise trips, buy books, support the food bank and many more resources and activities for the children at Park.

BUT we now need more help to be able to continue to support the school in the children's experience of primary school life and the opportunities they can have at this amazing school.

If you can offer a bit of time at a bake sale, a contribution of ideas, help in organising larger events, please send your name, contact no to [psa@park.newham.sch.uk](mailto:psa@park.newham.sch.uk). and we will add you to the what's app group where we plan these events in what little time we all have! We can't do this without the Park community support and we will be stronger together!

Oh, and we have a summer fayre to plan for... Please join us!

### Poetry in the Park





## Park Primary School Toddler Play Sessions



### Toddler and Parent Play Sessions

- Enjoy, learn and play in our indoor and outdoor environments.
- Meet other parents with young children.
- Join in with rhymes and songs.



#### Indoor toddler sessions for 1-3 years

Wednesdays for 15 weeks  
Starting from 26th April  
11:15 - 12:30

#### Outdoor toddler sessions for 2-3 years

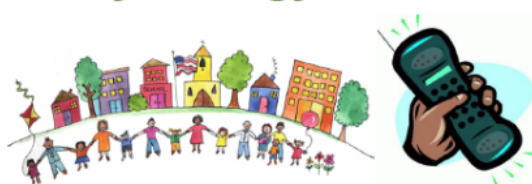
Fridays for 15 weeks  
Starting from 28th April  
1:30 - 3:00 (come dressed for the weather)

Please come to the main school gate on Matthews Park Avenue and a member of staff will direct you to the session.

Note: No sessions on the 31st May or 2nd of June due to the half term holiday.

## Newham Educational Psychology Service

### Newham Educational Psychology Service



#### Parent Advice Phone-In with an Educational Psychologist (EP)

The EPS Parent Advice sessions are offered to any Newham parent or carer who would like to discuss concerns about their child with an educational psychologist (examples may include: your child's emotional well-being, challenging behaviours, learning progress, your relationship with your child or some of your own worries). The sessions aim to be supportive, confidential, and informal. Each session is 40 minutes.

Please note these are stand-alone, one-off sessions that do not result in follow-up work. They are free sessions and open to all parents and carers of Newham children and young people. There is no criteria or threshold to access these sessions.

#### Sessions are monthly on:

16 May      13 June      11 July 2023

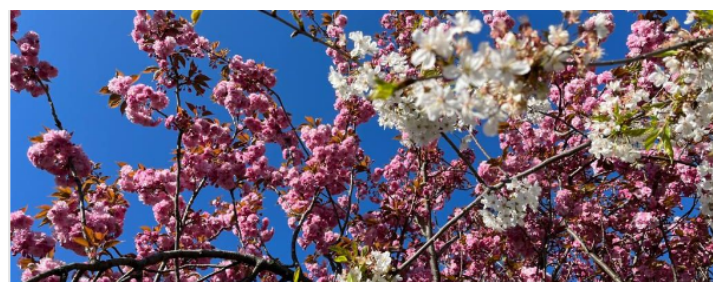
To book a session between 10 and 12 noon contact

Terrie on: [07855 975308](tel:07855975308) or email: [eps@newham.gov.uk](mailto:eps@newham.gov.uk)  
Book early to avoid disappointment

## Coronation Street Party



## Forest School Community Garden - Super Saturday



Forest Gate COMMUNITY GARDEN

#### OPENING HOURS

Friday 10 - 5pm  
Saturday 10 - 3pm  
Sunday 10 - 1pm  
[info@fgcommunitygarden.org](mailto:info@fgcommunitygarden.org)  
[www.fgcommunitygarden.org](http://www.fgcommunitygarden.org)

## Bag2School Collection

Collection of any unwanted clothing will be after the Spring Break. Please do not bring your bags in until the day before the collection which is the 11th May 2023 as we do not have enough storage. The collection is on 12th May 2023 at 9:00 am.

Thank you



## Auditions to Royal opera House

The Royal Opera House is delighted to invite children aged 7-11 with a passion for the performing arts to audition for our [Youth Opera programmes](#) this July. This programme is completely free for all members and no experience or knowledge of opera is required, just a love of singing and performing and an enthusiasm to explore and create opera with the ROH.

### Who are we looking for?

We invite applications from all enthusiastic young singers and performers aged 7-11. We particularly welcome applications from boys, those who are from a [global majority](#) background and/or those who are disabled, as they are under-represented within our programmes. Applicants should be able to demonstrate:

- a passion for and commitment to singing and good vocal control.
- an interest in drama and performing skills.
- the ability to collaborate well with others and follow directions.

### How to apply?

Before applying, we ask that you watch this [introductory video](#) and then complete our [‘What is Opera’](#) digital workshop.

### Instructions for Parents/Guardians:

**Submitting your application (deadline 12pm Fri 9<sup>th</sup> June 2023):** [Complete this form](#) to express your child’s interest in auditioning. The form requires you to submit a short 30 second video of your child singing the ‘Happy Birthday’ song.

**Round 1 audition (Sat 22<sup>nd</sup> July):** successful applicants will be invited to a one-hour audition workshop at the Royal Opera House.

**Round 2 audition (Sun 23<sup>rd</sup> July):** successful applicants from the round 1 auditions will be invited to attend a call back audition, during which the final selections will be made.

### What to expect at an in-person audition

Children invited to attend in-person auditions will join 30 other children for a one-hour workshop. This will be led by two of our ROH artists who will run music and drama-based games and singing activities. We aim for our audition workshops to be fun, friendly, and relaxed, and regardless of the outcome, educational and enjoyable for all.

For more information on the ROH Youth Opera programmes, please email [youthopera@roh.org.uk](mailto:youthopera@roh.org.uk)